

Presbytery of  
Sheppards and Lapsley  
COMMISSIONER PACKET



Spring Stated Meeting

May 15, 2025

*Grace Presbyterian Church  
113 Hargrove Road  
Tuscaloosa, AL 35403*

*(205) 758-1193*

## TABLE OF CONTENTS

Important information about the February meeting .....	1
Registration deadline.....	1
Packet link .....	1
Zoom link .....	1
Attending a Presbytery Meeting.....	2
Guidelines for participating in Presbytery meetings .....	2
Presbytery meeting dates.....	3
General Notes .....	3
Stay connected.....	3
Lunch.....	3
Directions .....	4
Parking .....	4
Proposed docket .....	5
Transition/Search Committee Report.....	7
Executive Council Report .....	8
Pine Hill Tornado .....	10
Standing Rule edits.....	11
General Presbyter Report .....	12
Commission on Ministry Report.....	14
Mission Coordinator Report.....	15
Trustees' Report .....	16
Vine Hill Quitclaim Deed .....	17
Vine Hill documents.....	18
Nominating Report .....	29
Living River Report .....	30
Presbyterian Home for Children Report .....	34
Sharon Moore celebrates 40 years at PHFC .....	36
Stated Clerk Report .....	38
First, Anniston Administrative Commission Report.....	40
Providence Administrative Commission Report.....	41

## **IMPORTANT INFORMATION FOR THE UPCOMING MAY PRESBYTERY MEETING**

This Presbytery meeting will be a Hybrid meeting (in person/zoom) at Grace Presbyterian Church, Tuscaloosa, AL. **We strongly encourage you to attend in person. It is our intent to provide a hybrid meeting through zoom. We cannot guarantee internet access but, we do expect it to work.**

Below are important details regarding registration link, zoom link for the Presbytery meeting and packet link.

### **Information for ALL Presbytery meeting participants**

#### **Presbytery Registration (No later than Friday, May 9, 2025)**

Please use the link below to register for the meeting. It is very important that you register by May 9th, no later than noon. This is so we can get an accurate number for a quorum, lunch reservations and so that admission from the waiting room goes smoothly.

**<https://forms.gle/JiHESjhh83GmY6VQ6>**

#### **Packet Link**

Ministers and Commissioners, please download and read the presbytery packet before the meeting. Click the following link for the packet: <http://pslpcusa.org/meetings/>

*Scroll to the bottom of the page and click the links for the packet and the previous meeting minutes.*

A Worship folder will be sent out the day before the meeting.

### **Information for Zoom participants only**

#### **Presbytery meeting Zoom link - We strongly encourage you to attend in person.**

For the day of Presbytery, May 15<sup>th</sup> beginning at 9:00 AM (see link below) The actual meeting will begin at 9:30 AM. (As you enter, you will start in the "waiting room." Please be patient - you'll be brought into the main room as soon as possible.)

Join Zoom Meeting

<https://us02web.zoom.us/j/87250339304?pwd=6ijDYbxTEvrw4TGC7W9vAzLrgabuQP.1>

Meeting ID: 872 5033 9304

Passcode: 642738

You may also join us via telephone call. To call in, dial - 1 312 626 6799

**In person participants – please review pages 2-3**

## ATTENDING A PRESBYTERY MEETING

As a Commissioner to the Presbytery, we welcome you! When you arrive, there will be a registration area for those that did not register online. **(Please fill out a registration card even though you registered online)** Worship folders and nametags will be available for pickup.

The meeting time of Presbytery is 9:30 AM until 3:00 PM., with registration beginning at 9:00 a.m. All the business of the Presbytery is contained in this packet.

The packet will detail items that you, as a commissioner, will need to take action upon and items for your information. Some items will have discussion, and some items will be contained within an omnibus motion. All items in the omnibus motion are voted on at one time, during the Clerk's report. As a commissioner, if you desire to ask a question or debate any item you need to stand at the time of the motion's presentation and request that item be extracted. The item will then be removed and voted upon separately. Information items come from various committees and entities of the Presbytery that wish to inform you of things they are working on or committee actions they are empowered to take.

On the day of the meeting, a worship folder will be distributed. This worship folder will contain, in order, all the items that will be presented to the commissioners. The difference between the packet and the worship folder is that the worship folder will not have supplemental material, such as faith statements, addendum and resource items. The packet and worship folder are meant to go hand in hand to help you with the flow and business of the meeting.

Please read the introductory items in the packet. These items contain information about parking, directions to the meeting, how to make motions if you wish, and information on parliamentary process.

The meetings of Presbytery have been designed to provide opportunities for the community to worship and discuss issues together, as well as do the business that is before it for consideration.

Again, welcome!

## GUIDELINES FOR PARTICIPATING IN PRESBYTERY MEETINGS

1. When speaking at Presbytery, please address the Moderator and not the body. (Zoom: Raise your hand)
2. Introduce yourself, by stating your name, church and role.
3. Our rules are that each speaker during debate has up to two minutes to address the issue to which they are speaking. The Moderator may give a 30-second warning, so that you may conclude your remarks.
4. Only enrolled commissioners are authorized to vote on issues. Corresponding members are entitled to address the Presbytery.
5. Any motion made from the floor (be it a new motion, a substitute motion or an amended motion) must be given to the Stated Clerk in writing, at the time the motion is made. (Zoom: Through Chat room)
6. Any new business must be placed in the hands of the Stated Clerk, **before** the approval of the docket. (Zoom: through the chat room by 11:00 AM)

## SAVE THE DATES FOR 2025 PRESBYTERY MEETINGS

May 15	Grace Presbyterian Church, Tuscaloosa	9:30 AM – 3:00 PM
August 21	First, Birmingham Presbyterian Church	9:30 AM – 3:00 PM
November 20	Edgewood Presbyterian Church	9:30 AM – 3:00 PM

### GENERAL NOTES FOR THIS MEETING

1. The offering for this meeting will go to the **Commission on Preparation for Ministry's scholarship fund and the Presbytery Pastoral Care fund**. Please make checks payable to *Presbytery of Sheppards and Lapsley* or you may use the *QR code to the right*. Please indicate your donation as "*Presbytery offering*".
2. Requests for an **excused absence** from today's meeting should be addressed to the Stated Clerk, Jay Wilkins at [statedclerk@pslpcusa.org](mailto:statedclerk@pslpcusa.org) or 205-978-0320, ext. 305.
3. Please contact Tammy Strickland at [tstrickland@pslpcusa.org](mailto:tstrickland@pslpcusa.org) by Friday, May 9, 2025 to reserve **display space (tables) for this meeting**.

 **PayPal**



**Scan. Pay. Go.**

**Please turn in your hanging name badge when the meeting is concluded.**

### STAY CONNECTED

If you would like to receive the Presbytery newsletter, please contact Tammy at [tstrickland@pslpcusa.org](mailto:tstrickland@pslpcusa.org). For more information about the Presbytery, please visit our website at <http://www.pslpcusa.org>.

### LUNCH

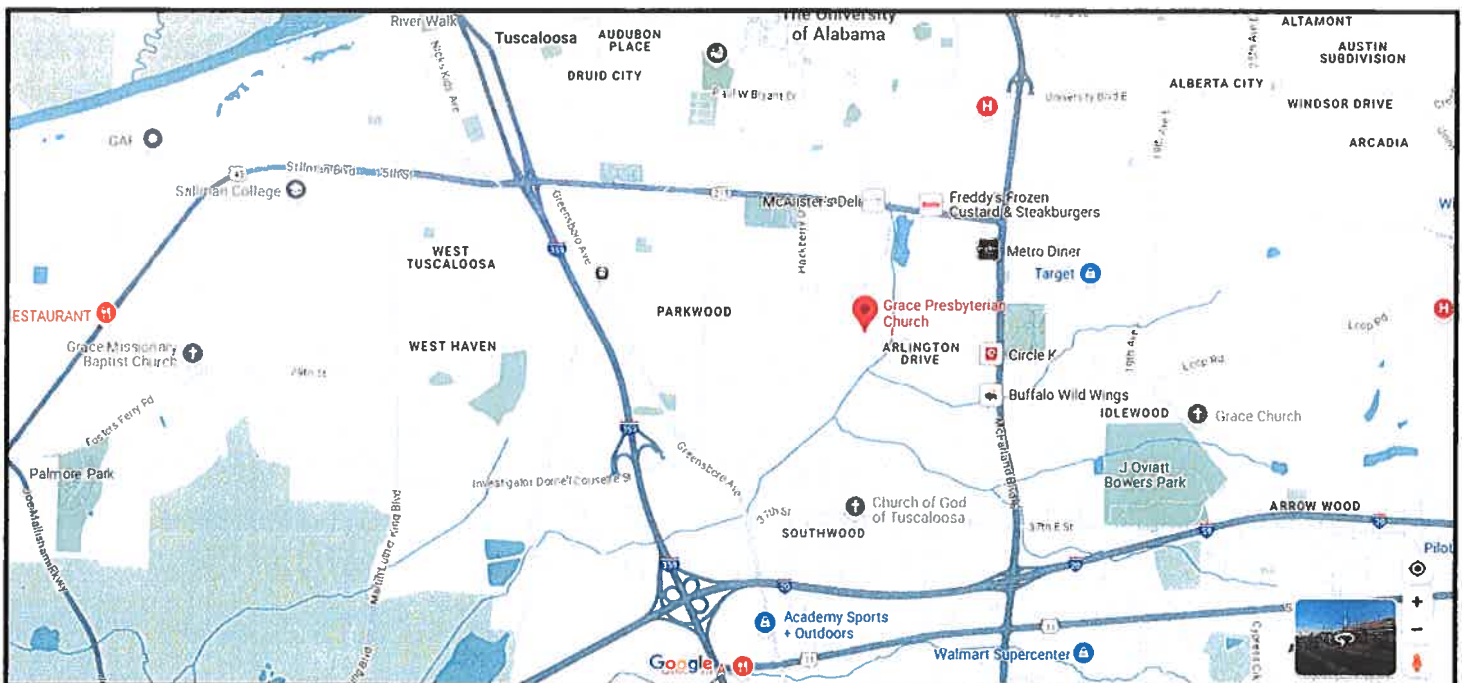
Grace Presbyterian Church, is graciously preparing lunch (\$10) for attendees of this meeting (**cash or check only**). Please purchase tickets during registration. Make checks for lunch payable to **Grace Presbyterian Church**.

## DIRECTIONS to GRACE PRESBYTERIAN

You can GPS to the address below  
113 Hargrove Road  
Tuscaloosa, AL 35403

**From Montgomery and Selma:** Follow US-82 W to Hargrove E Rd in Tuscaloosa. Turn left on Hargrove E Rd. Turn left on Prince Ave. Turn right into the church parking lot.

**From Birmingham:** Follow I-20 W to US-82 W.



**Note about parking:** Grace shares its parking lot with Table of Grace, a client-choice, market-style food ministry of Grace, which will be open on the day of the Presbytery meeting. Please plan to carpool to the meeting, so that we can accommodate everyone who needs a parking space. Tours of Table of Grace will be available after the Presbytery meeting, so please plan to stay for a short introduction and tour of the market and raised-bed garden. Table of Grace is the largest purchasing agency affiliating with the West Alabama Food Bank and distributors approximately 30,000 pounds of food to 900 families (2500 individuals) every month.

**Please DO NOT park at the Masonic Lodge!**

**Proposed Presbytery Meeting Docket**  
**May 15, 2025**  
**Grace Presbyterian Church of Tuscaloosa, AL**

9:00 AM      Registration

9:30 Call to Order and Opening Prayer Moderator Jonathan Yarboro  
Organization – Declaration of Quorum, Adoption of Docket, Seating of Corresponding  
Members, Welcome of First Time Commissioners, Welcome of Visitors, Requests for  
New Business to the Stated Clerk in writing by 11:00 AM

**Omnibus Motion:**

1. To approve the minutes of the February 20, 2025 meeting
2. To approve the requests for absences from today's meeting
3. To adopt an "Electronic Meetings Rule" for this meeting so that virtual attendees seeking recognition from the Chair be allowed to unmute themselves and call for the attention of the Moderator for recognition and obtaining the floor.
4. To approve the minutes of the Commission of the Presbytery to install the Rev. Nicole Newton as Associate Pastor of the Independent Presbyterian Church on March 2, 2025.
5. To accept these invitations to host meetings of the Presbytery: on August 21, 2025, at the First Presbyterian Church of Birmingham; on November 20, 2025, at Edgewood Church .

9: 45    Welcome from Host Church Caroline Kelly  
 Service of Worship and Sacrament of the Lord's Supper

11:00 Transition/Search Committee Jane Clayton

11:15 Executive Council Deborah Thomas

1. Good News from Matthew 25 Congregations:  
The Presbytery of Sheppards and Lapsley is a Matthew 25 Presbytery where:  
We do hereby commit to become a Matthew 25 mid council. We pledge to encourage 20% or more of our congregations to become Matthew 25 churches and embrace these areas of focus: Building congregational vitality; Dismantling structural racism; Eradicating systemic poverty. We promise to keep track of the impact of our ministry and share our stories with the PC(USA) from time to time.

2. Anti Racism Committee Tom Bryson

3. Wilcox County Task Force Terry Hamilton-Poore

4. Responding to Pine Hill Community tornado James Ephraim

5. Proposed Amendments to PS&L Standing Rules -- see attached for a first reading

11:40 Good News from our Churches:

Livingston's campus ministry  
Grace's Table of Grace

Luke Ponder  
Caroline Kelly

12:00 Lunch

1:00 PM Greetings from Linda Sharp of the Presbyterian Investment and Loan Program, Inc.

1: 15 General Presbyter's Report Sue Westfall

1: 30 Commission on Ministry Carl Martin

1:45 Mission Ralls Coston  
Congo Mission Partnership & Network Conference Charles Nash

2:00 Trustees Lant Davis

2:15 Nominating Rick Atkerson

2:25 Living River Rachel Mathews

2:35 Presbyterian Home for Children Cindy Fisher

2:45 Stated Clerk Jay Wilkins  
Reports from Administrative Commissions:  
Anniston FPC; Montgomery, Providence

New Business from Bills & Overtures

3:00 PM Adjournment with Prayer Moderator Jonathan Yarboro



## Report from the Transition/Search Committee

Since both Sue Westfall and Jay Wilkins are retiring, a Transition/Search Committee has been selected to study and make recommendations for their replacements. This committee consists of Jane Clayton, chair; Elizabeth Goodrich, clerk; David Seamon, James Ephraim, Darryl Love, Joe Spransy, and Cecilia Chang. This group has met three times thus far and will be meeting regularly until the search is completed. Jay's term of service ends in 2025, and Sue's in early 2026. We are aware that we have much work to do, but our goal is to recommend new staff at the November presbytery meeting.

The team has met with both Sue and Jay to learn about the jobs as they currently exist. Both job descriptions will be assessed with opportunity for input from various groups or individuals in the presbytery. The team plans to meet with the volunteer coordinators as well as Tammy Strickland in early May. We also plan to meet with the Executive Council as well as the Commission on Ministry to receive any input they might have.

Our team will be preparing a Mission Development Profile for approval by the Executive Council prior to beginning an active search. To provide opportunities for presbytery members to express thoughts or concerns they have about presbytery staffing, we plan to host two Zoom meetings for which you will receive notice.

My email is [janeclayton106@gmail.com](mailto:janeclayton106@gmail.com), or you can always reach me through Tammy at the presbytery office. I welcome your thoughts as well as your prayers for this committee's work.



## PRESBYTERY OF SHEPPARDS AND LAPSLEY EXECUTIVE COUNCIL

### **Class of 2025**

Leann Scarbrough\*  
Joe Scrivner\*  
Deborah C. Thomas

### **Class of 2026**

Jothany James  
Neil McCarter\*  
Wendy Tucker  
Jonathan Yarboro\*

### **Class of 2027**

Tom Bryson\*  
Terri Moon Jones  
Donna Winn  
Terry Hamilton-Poore\*

\*Ministers of the Word and Sacrament

## EXECUTIVE COUNCIL REPORT – MAY 2025

The Executive Council has held two meetings since the February Stated Meeting of the Presbytery of Sheppards and Lapsley. The meetings were held on March 18, 2025, and April 22, 2025.

### **Items approved:**

- Approved all repairs, painting, and carpeting at the Presbytery Office required due to water damage, not to exceed the amount paid by the UCC Insurance Board. (Trustees)
- Approved exterior painting of the Presbytery Offices and all related repairs not to exceed \$4,000. (Trustees)
- Approved contact with Linda Sharp of the Presbyterian Investment and Loan Program, Inc. to speak at the May Presbytery Meeting. (Stated Clerk)
- Approved postponement of the executive council meeting from April 15 to April 22, 2025, in respect of Holy Week.
- Approved Financial Appeal at the May Stated Meeting of Presbytery to support the Pine Hill Community (Wilcox County) in response to tornado damage.
- Approved the proposed docket for the Presbytery Meeting on May 15, 2025.

### **Action Item recommended by Council:**

- **Approved three edits to the Presbytery's Standing Rules. (Stated Clerk)**
  - **Page 12: SR-6.01.01.03 -- Agencies of Presbytery (Executive Council)**
  - **Page 16: SR-6.01.03 – Agencies of Presbytery (Presbytery Committees)**
  - **Page 6: SR-3.01.05 – Meetings and Organization (Quorum)**

## EXECUTIVE COUNCIL REPORT – MAY 2025

Page 2

### Informational Items:

- Received updates from the Trustees (Bill Stribling on behalf of Lant Davis).
- Received updates from the Committee on Ministry regarding the status of congregations (Carl Martin).
- Received updates on planning for the Congo Mission Network Conference and the needs from the Presbytery as a conference sponsor (Charles Nash).
- Received updates on required documentation of training per the Children and Youth Policy (Equip, Nurture, and Connect Report).
- Received preliminary information regarding the planning of a seminar to support perspectives on congregational vitality (Equip, Nurture, and Connect Report).
- Received details related to the receipt of a Lilly Grant for Wilcox County (Wilcox County Task Force Report).
- Received an overview of an event (Anti-Racism Committee Report) that was presented as anti-racism training. A viewing of the film, "At the River", followed by discussion was presented at Southminster Presbyterian Church in Birmingham on April 6, 2025.
- Received an update on the status of the Transition/Search Committee Process. (Executive Presbyter)

### Announcements

1. An event held on April 26, 2025, at First Presbyterian Church in Birmingham focused on structural racism and was led by D. Danielle Thomas. (Unpacking Kendrick Lamar's Super Bowl Half-time Show)
2. The General Presbyter, the Stated Clerk, the Moderator of the Presbytery, and the Moderator of the Executive Council represented the Presbytery of Sheppards and Lapsley on Sunday, April 27, 2025, at Providence Presbyterian Church in Montgomery, Alabama, during the congregation's last worship service before vacating the building.

Deborah C. Thomas, Executive Council Moderator

### Help needed for our siblings in Wilcox County!

On April 9, 2025 a tornado touched down in Camden and Arlington, Alabama in the Pine Hill area of our presbytery. This is in the Black Belt and is home to two of our African American congregations - Annemanie in Arlington and New Trinity in Camden - and members of both congregations were personally affected though the church buildings themselves were not damaged. There were many downed trees and much debris from shattered structures. Wilcox County, in which these towns are located, is one of the most depressed counties in the state. What the county did was to remove all the downed trees and other debris from the road and pile it up on the edge of people's property but have not removed it from the property nor did they help with the removal of debris that struck and damaged houses. This leaves many people with the task of either removing the debris themselves (though few have the heavy equipment necessary to do so) or hiring someone to remove the debris from their yards. In some of the affected properties, the homeowners did not have insurance. At its meeting last Tuesday, the **Executive Council set up a relief fund and is asking you to help out.**

This is the link for the information about the tornado itself: <https://www.waka.com/2025/04/09/action-8-update-survey-team-confirms-two-tornadoes-hit-wilcox-county/>

The United Presbyterians of Wilcox County are coordinating the effort of debris clean up. The presbytery is receiving the donations from our congregations. Please send your donations to the Presbytery Office marked "Pine Hill Tornado" 3603 Lorna Ridge Drive, Birmingham, AL 35216 or online with the link below making sure you earmark for "Pine Hill Tornado": <https://pslpcusa.org/online-giving-paypal/>



Stated Clerk's recommendations for edits to our Standing Rules: 3/3/2025

**additions in bold italic: deletes strikethrough.**

FYI -- I have been communicating with our Trustees who are realizing that they do not have an avenue to report to the Executive Council. I have two recommendations (1 & 2 below) for including the Presbytery Committees (as they are titled in the Standing Rules) in the regular work of the EC.

The third suggestion comes from confusion over wording in the Standing Rules regarding quorum for our meetings, and from shrinking numbers of churches. Pat Goodman did a lot of research comparing quorums from many Presbyteries!

A reminder -- the process for changes in the Standing Rules is described in the Rules:

SR-2.01.03 These Standing Rules may be amended as follows: A proposed amendment shall be presented in writing to the Executive Council, which in turn shall present the proposal to the next meeting of Presbytery with its recommendations. To become effective, an amendment must be approved by two-thirds of the votes cast at one meeting of Presbytery and adopted without further revision by two-thirds of the votes cast at the next meeting.

1) on page 12: SR-6.01.01.03 The Executive Council shall ordinarily meet monthly and on the call of the moderator of the Executive Council. ***At each meeting, the Executive Council shall invite and receive reports from the Presbytery Committees: Trustees, Nominating and Representation, and Anti-Racism .***

2) on page 16: SR-6.01.03 Presbytery Committees

***A representative from each of the Presbytery Committees (Trustees, Nominating and Representation, Anti-Racism) shall be invited to report to the Executive Council at its meetings.***

3) on page 6: SR-3.01.05 A quorum of a ~~stated~~ meeting of the Presbytery ~~shall be 20 Ministers of Word and Sacrament and 20 ruling elders, representing at least 20 congregations. A quorum of a called meeting of the Presbytery shall be 15 Minister of Word and Sacrament and 15 ruling elders, representing at least 15 congregations.~~ ***shall be no be fewer than three ministers of the Word and Sacrament who are members of the Presbytery and three ruling elder commissioners from three different congregations. (Book of Order G-3.0304) This permits Administrative Commissions to function as the Presbytery.***

Report of the General Presbyter of the Presbytery of Sheppards and Lapsley  
 Sue Westfall  
 May 2025

Greetings in this Eastertide! Eastertide is a season of claiming the potent promise of redeemed and resurrected life even before it is fully realized in the world or in our own congregational or personal lives. It is the stunning and reassuring hope that, come what may, God has the last word and it is a word of mercy, grace, and new life. From some years ago I remember the hymn, *Every Sunday is Easter Sunday from Now On!*:

Every Sunday is Easter Sunday from now on!  
 Every Sunday is Easter Sunday from now on!  
 And though the day may be filled with pain  
 And the tears may fall like rain  
 I know that my God will hold me in His hand  
 He'll be the strength that I'm looking for, understand  
 He's my king and I'm gonna sing  
 Every Sunday is Easter Sunday from now on!

So we move into the future with confidence and eager anticipation! The future, of course, is already unfolding in the present. In this presbytery, the presbytery's elected Transition/Search Team is up and running and provide their own report in these pages as they seek new leadership for the presbytery.

\*\*\*\*\*

Sociologist William Bridges has done ground-breaking work on **change and transition**. He notes that change is a process of an ending, a neutral time, and a new beginning. We are in the neutral time. Here's a quick guide to his model:

### Endings

Transition starts with an ending. This is paradoxical but true. This first phase of transition begins when people identify what they are losing and learn how to manage these losses. They determine what is over and being left behind, and what they will keep. These may include relationships, processes, team members or locations.

### Neutral Zone

The second step of transition comes after letting go: the neutral zone. People go through an in-between time when the old is gone but the new isn't fully operational (you are here). It is when the critical psychological realignments and repatterning take place. It is the very core of the transition process. This is the time between the old reality and sense of identity and the new one. People are creating new processes and learning what their new roles will be. They are in flux and may feel some amount of confusion or even distress. The neutral zone is the seedbed for new beginnings.

## New Beginnings

Beginnings involve new understandings, values and attitudes. Beginnings are marked by a release of energy in a new direction – they are an expression of a fresh identity. Well-managed transitions allow people to establish new roles with an understanding of their purpose, the part they play, and how to contribute and participate most effectively. As a result, they feel reoriented and renewed.

This presbytery has a great reservoir of good will and trust and we all, and your new future leaders, will be buoyed by that and prompted by the Holy Spirit as we move through this neutral zone into God's future.

\*\*\*\*\*

In other news, it was a joy, on Earth Day, to convene a group of 13 people who represent this presbytery's earth care congregations. Earth Care Congregations is a support program of the PCUSA to aid churches in their efforts to "walk lightly" upon the earth. So many of our congregations (whether they have declared themselves Earth Care Congregation or not) are making efforts to reduce their footprint on the earth such as:

- Not using styrofoam for coffee cups
- Offering fairly traded coffee for fellowship times
- Replacing lights with more energy efficient LED models
- Reducing their use of paper products
- Incorporating earth care into their liturgy, hymns, and sermonic themes
- And much more.

The Reverend Sam Hamilton Poore is a member of the Presbyterians for Earth Care steering committee. Check the website for Earth Care Congregations here: <https://pcusa.org/about-pcusa/agencies-entities/interim-unified-agency/ministry-areas/hunger-program/sustainable-livingearth-care-c>.

And in a final note, Sunday, April 27, saw the last worship service for Providence Presbyterian Church in Montgomery with Dr. Deborah Thomas representing the presbytery (later joined by Jonathan Yarboro whose support of that congregation spans decades). The sanctuary was full, the choir in full voice, and Nan Adams' message so fitting and reassuring. The building is under contract and it is the congregation's intent to use the proceeds of its sale to fund mission in perpetuity.

In life, in death, in life beyond death, we belong to God!

As ever in prayer,

Sue

## Commission on Ministry

The Commission on Ministry report will be an addendum in the Worship folder.



## Mission Coordinator's Report to Presbytery, April 25, 2025

1. The Congo Mission Network Conference, hosted by this Presbytery, will be on October 23-25, 2025, at Stillman College and Brown Memorial Presbyterian Church. Planning for the Conference is continuing. We are getting close to making arrangements with a hotel in Tuscaloosa for rooms. Also, it is planned to make the Conference to be hybrid, with in-person meetings and Zoom. People from the US and the DR Congo will be able to attend the Conference virtually. It is likely that we will need churches and volunteers to help provide meals, transportation, etc.
2. The Birmingham Habitat House construction will begin Thursday, May 8. The house will be built for the Jasmine Jones family. The house is at 4016 Morninghope Drive, Bessemer. Construction should take 6-8 weeks. If you church or individuals wish to volunteer, contact Ralls Coston or go online at [habitatbirmingham.org](https://habitatbirmingham.org).
3. This Presbytery is a member of Alabama VOAD (Volunteer Organizations Active in Disaster). VOAD is comprised of churches, secular organizations, government agencies ( county, State and Federal). It is focused on disaster response and long-term recovery. ALVOAD meets quarterly and shares information about needs and resources. The Presbyterian Church USA focuses on long-term recovery from disasters. This is what we have been doing in Selma since the 2023 tornado.
4. A tornado has done damage in the Pine Hill community in Wilcox County. Much of the damage consists of blown-down trees that need to be removed from people's property. If you want to contribute to help with this need, please send your check to the Presbytery office, marked for Wilcox Tornado Recovery, or you may send your check to the United Presbyterians of Wilcox County.

**Trustees' Report  
Presbytery of Sheppards and Lapsley  
May 15, 2025, Assembly**

The Trustees of the Presbytery of Sheppards and Lapsley have one item for action at this assembly.

**For Action**

The background to this requested action is contained in a letter dated December 1, 2024, and its attachments, from Larry E. Caver, President of the Old Autauga Historical Society, to Sue Westfall, General Presbyter of the Presbytery of Sheppards and Lapsley, a copy of which letter and attachments are presented to this meeting as a part of this report.

The trustees recommend and move as follows:

That, for nominal consideration, the appropriate officers of the Presbytery are authorized to execute and deliver a Quitclaim Deed to property of the former Vine Hill Presbyterian Church situated in Autauga County, Alabama, substantially in the form presented at this meeting; and that the trustees and officers of the Presbytery are authorized to take such other actions on behalf of the Presbytery as they deem necessary and appropriate to the sale of such property.

Respectfully submitted by:

Lant Davis, Moderator  
Bill Stribling  
Shelaine Bird  
Beverly Krannich, Secretary  
Terry Newland

Katherine Michael  
Krysten Scrivner  
Steven Deal  
Alan Sydnor

**Grantee:**  
**Old Autauga Historical Society**  
**P.O. Box 622**  
**Autaugaville, AL 36003**

**Grantor:**  
**Presbytery of Sheppards and Lapsley**  
**3603 Lorna Ridge Drive**  
**Birmingham, AL 35216**

**Tax Exempt**

**STATE OF ALABAMA**  
**COUNTY OF AUTAUGA**

**QUITCLAIM DEED**

KNOW ALL MEN BY THESE PRESENTS, that for and in consideration of ONE (\$1.00) Dollar, in hand paid to the undersigned, the receipt whereof is hereby acknowledged, the undersigned, **PRESBYTERY OF SHEPPARDS AND LAPSLEY, Grantor**, (hereinafter referred to as Grantor), quit claims and conveys to **OLD AUTAUGA HISTORICAL SOCIETY, Grantee**, (hereinafter referred to as Grantee), any right, title, interest and claim it holds in or to the following described real estate, situated in Autauga County, Alabama, to wit:

The approximately 1 acre lot known as the Parsonage lot and/or church property on the Map of Vine Hill Land Company, as said Map appears of record in the Office of the Judge of Probate of Autauga County, Alabama in Deed Book 44 at Page 364, re-recorded in Map Book 1, Page 24, and re-recorded again in Map Book 2 at Page 231. Said property identified as Tax Parcel 05-04-20-0-000-001.003. To the extent necessary, this deed conveys the remainder of the property owned by Presbytery of Sheppards and Lapsley and Vine Hill Presbyterian Church in Autauga County.

This property was previously owned by Vine Hill Presbyterian Church. Presbytery of Sheppard and Lapsley is the successor-in-interest to Vine Hill Presbyterian Church.

Subject to covenants, restrictions, reservations, easements and rights of way appearing of record affecting subject property.

**THIS DEED PREPARED WITHOUT BENEFIT OF TITLE.**

TO HAVE AND TO HOLD to said GRANTEE forever.

Given under my hand and seal, this the \_\_\_\_\_ day of \_\_\_\_\_, 2025

**PRESBYTERY OF SHEPPARDS AND LAPSLEY**

\_\_\_\_\_  
**By: Walter Jeter Wilkins, III**  
**Its: Stated Clerk**

**STATE OF ALABAMA**  
**COUNTY OF AUTAUGA**

I, the undersigned authority, a Notary Public in and for said County, in said State, hereby certify that **Walter Jeter Wilkins, as stated clerk for the Presbytery of Sheppards and Lapsley**, whose name is signed to the foregoing conveyance, and who is known to me, acknowledged before me on this day, that, being informed of the contents of the conveyance, he, executed the same voluntarily on the day the same bears date

Given under my hand and official seal on this the \_\_\_\_\_ day of \_\_\_\_\_, 2025

(SEAL)

\_\_\_\_\_  
**NOTARY PUBLIC**  
**My Commission Expires: \_\_\_\_\_**

This instrument prepared by:  
**KYLE SHIRLEY**  
**McDOWELL, FAULK & SHIRLEY, L.L.C.**  
**145 W. Main St.**  
**Prattville, AL 36067**  
**(334) 365-5924**  
**File No.2025-097-RE-4**

**Old Autauga Historical Society**  
**P.O. Box 622**  
**Autaugaville, Alabama 36003**

December 1, 2024

Presbytery of Sheppards & Lapsley  
 Sue Westfall  
 3603 Lorna Ridge Drive  
 Birmingham, Alabama 35216

Re: Vine Hill Presbyterian Church

I am writing regarding the historic Vine Hill Presbyterian Church (1887) located in Northwestern Autauga County near Jones. The church was originally established after the Civil War by the Lapsley Family. The church closed in the early-1990s. The church and cemetery (5.9 acres) were deeded by the Presbytery to former members under the name of Frank E. Bagby Cemetery Association. Many of the former church members are now gone. Back in 2020, Old Autauga Historical Society (OAHS) became guardian of the property under an agreement with two surviving members, David Bagby and Danny Blue. The old church was in great need of repair as the floors had rotted out. OAHS raised private funds (\$17,000) and secured additional state grants from the Alabama Historical Commission (AHC) and the Mid-South RC & D Council to replace the interior floors, foyer, and belfry tower. The church and cemetery are now on the state historic register, and are marked as such by a state roadside historic marker. The church building is NOT used for any church services. All surviving members of the church are members at Jones Baptist Church, Pleasant Valley Methodist Church, etc. OAHS holds periodic historic meetings at the church as well as an annual blue grass gospel event every November. The church is a museum to the former members of the church and Vine Hill community.

The old church never had indoor restrooms, and they can not be added to the historic structure. OAHS wants to raise funds (grants) to build a detached restroom (s) that will operate on county water and a septic system. However, based on the geography of the ridge, there is no place to install a septic tank. Apart from the drive to church, church building and cemetery, the remaining property slopes downhill (bowl shape). It does not appear the bowl or drop off in front of church will perc for a septic tank.

The local probate judge and the local revenue commissioner are aware of the situation. We have recently learned that at the time the deed was executed to the Frank Bagby Cemetery Association (church/cemetery) that the old parsonage lot (1.3 acre lot) was NOT deeded over to the association, and that it remains in the name of Vine Hill Presbyterian Church (see enclosed copies).

**2024 Board Members**

Larry E. Caver, President

Jone Dennis, Vice-President

Linda Walker, Secretary

Lynn Langston Burrell, Treasurer

Jeannie R. Johnson, Board member  
 Southwest Autauga County

Heather S. Conner, Board member  
 Northwest Autauga County

Barbara Ware Russell, Board member  
 Northeast Autauga County

Shelly Wainwright, Board member  
 Southeast Autauga County

David Whitehead, Board member  
 Chilton County

Michele Washatka, Board member  
 Elmore County

Beth DeBusk, Member-at-large

I am writing regarding this 1.3 acre lot as it is flat and would be our best option to ever be able to build a modern day outhouse (with septic tank) for the special events we hold at the site. It is listed as parsonage lot but there is no surviving structure on the lot, which is now overgrown and wooded.

We are a 501 (c ) (3) public charity with IRS and the State of Alabama. We rely primarily upon annual membership dues, private donations and some public funding when available. We are not able to use public funds (grants) to buy the lot. We do not have a lot of private funds on hand to offer to purchase this lot. However, we are asking and praying that the Presbytery will consider selling or donating this 1.3 acre lot to OAHS. We will pray hard and sell lots of cakes if needed to raise the funds. If the presbytery would consider donating it, we will gladly pay for all legal/closing fees.

We do not see that another Presbyterian Church would flourish in this area. Most of the area rural churches (Baptist, Methodist, Presbyterian, etc.) are struggling to stay open themselves. However, we believe the history of the Lapsley Family, Vine Hill Church, etc., are worthy of preserving and sharing.

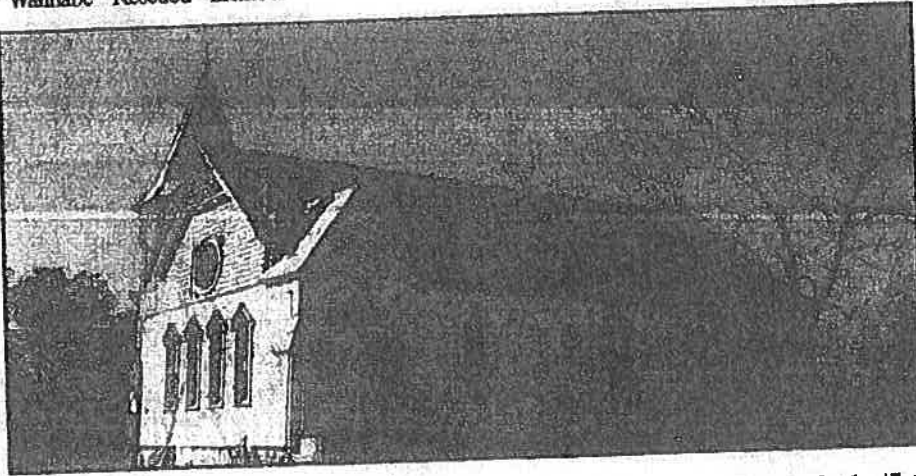
Thank you and the Presybtery in advance for consideration of this request. If you need any additional information, feel free to contact me.



---

Larry E. Caver, President  
Phone (334) 318-2568  
[larrycaverjr@yahoo.com](mailto:larrycaverjr@yahoo.com)

wannabe Rescued member



Contributed Photo

**LEADER:** Vine Hill Presbyterian Church in Autauga County will host an Old Autauga Historical Society Christmas exhibit this month.

## Vine Hill Presbyterian Church to host Christmas Exhibit during the month

By James Jones

*The Selma Times-Journal*

A church near the Dallas County line will host an old fashion Christmas exhibit this month.

Old Autauga Historical Society will host an old fashion Christmas exhibit at Vine Hill Presbyterian Church on County Rd 22, near Jones, Autauga County.

Hours are: Sunday, Dec. 5, Noon-4 p.m.

Saturday, Dec. 11, 9 a.m.-1 p.m.

Sunday, Dec 12, Noon- 4 p.m.

Tuesday, Dec. 14, Noon- 1 p.m.

Sunday, Dec. 19, Noon-4 p.m.

Vine Hill Presbyterian Church was established in the 1870's by Rev Robert Lapsley and family of Selma. The family made Vine Hill, which sits on the Dallas- Autauga County lines, their summer home.

Other families settled in the area on a more permanent basis. The Lapsleys and a few other

members of the old First Presbyterian Church of Selma established Vine Hill Church.

The first church structure was small and later used for the Vine Hill School. Around 1887, the congregation began building the current building which is made of native heart pine throughout.

The tongue and groove walls in the sanctuary arch upwards to form the center of the ceiling.

The church structure has survived many years and most of the original heart pine is still rock hard and solid. The congregation flourished into the 1900s, but by the late-1980s, the congregation dwindled until it was finally closed about 1990.

The church sat empty for years, with descendants of the original families visiting the old structure and cemetery. In 2019, the church was locked to prevent entry due to deteriorating floors inside and out of concerns that someone could get hurt. Old Autauga Historical Society (OAHS) adopted the old church and began restoring the precious structure.



*Selma Times-Journal*  
*Dec 4, 2021*



# ALABAMA HISTORICAL COMMISSION

468 South Perry Street  
P.O. Box 300900  
Montgomery, Alabama 36130-0900  
334-242-3184 / Fax: 334-240-3477

Lisa D. Jones  
Executive Director  
State Historic Preservation Officer

November 26, 2021

Larry E. Caver, President  
Old Autauga Historical Society  
P.O. Box 622  
Autaugaville, Alabama 36003

**RE: Vine Hill Presbyterian Church, Autauga County Road 22, Plantersville, Alabama**

Dear Friends:

It is my pleasure to present to you the certificate for the above referenced property in honor of its listing in the Alabama Register of Landmarks & Heritage.

Thank you for your dedication to preserving Alabama's historic resources.

Best Regards,

*Rebekah Reader*

Rebekah Reader  
Coordinator, Alabama Register of Landmarks & Heritage  
(334)230-2699  
Rebekah.Reader@ahc.alabama.gov

Enclosure



## ALABAMA HISTORICAL COMMISSION

468 South Perry Street  
P.O. Box 300900  
Montgomery, Alabama 36130-0900  
334-242-3184 / Fax: 334-240-3477

Lisa D. Jones  
Executive Director  
State Historic Preservation Officer

November 10, 2021

Attention: Larry E. Caver, President  
Old Autauga Historical Society (OAHS)  
P.O. Box 622  
Autaugaville, AL 36003

**RE: Vine Hill Presbyterian Church Cemetery, County Road 22, Plantersville, Autauga County, Alabama**

Dear Mr. Caver:

It is my pleasure to present to you the certificate for the above referenced cemetery in honor of listing on the Alabama Historic Cemetery Register.

Thank you for your dedication to preserving Alabama's historic resources.

With warm regards,

Leanne Waller-Trupp  
Cemetery Programs Coordinator  
Alabama Historical Commission  
334-230-2653  
Leanne.Trupp@ahc.alabama.gov

Enclosure



Year: 2024

Parcel #:

05 04 20 0 000 001.003

Owner:

Appraised Value:

VINEHILL PRESBYTERIAN CHURCH

\$9,700

Mailing Address

4223 COUNTY RD 22  
PLANTERSVILLE AL 36758

Neighborhood:

CRES0003

Subdivision:

NOT DEFINED

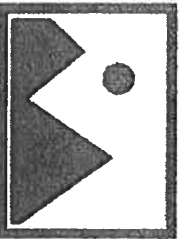
Acreage: 1.320

Section: 20

Township: 19N

Range: 12E

School District: 02



No image available

Total Improvement Value

\$0

Total Land Value

\$9,700

Market Value

\$9,700

Appraised Value

\$9,700

Assessed Value

\$1,940

Total Tax

\$0.00

Fee

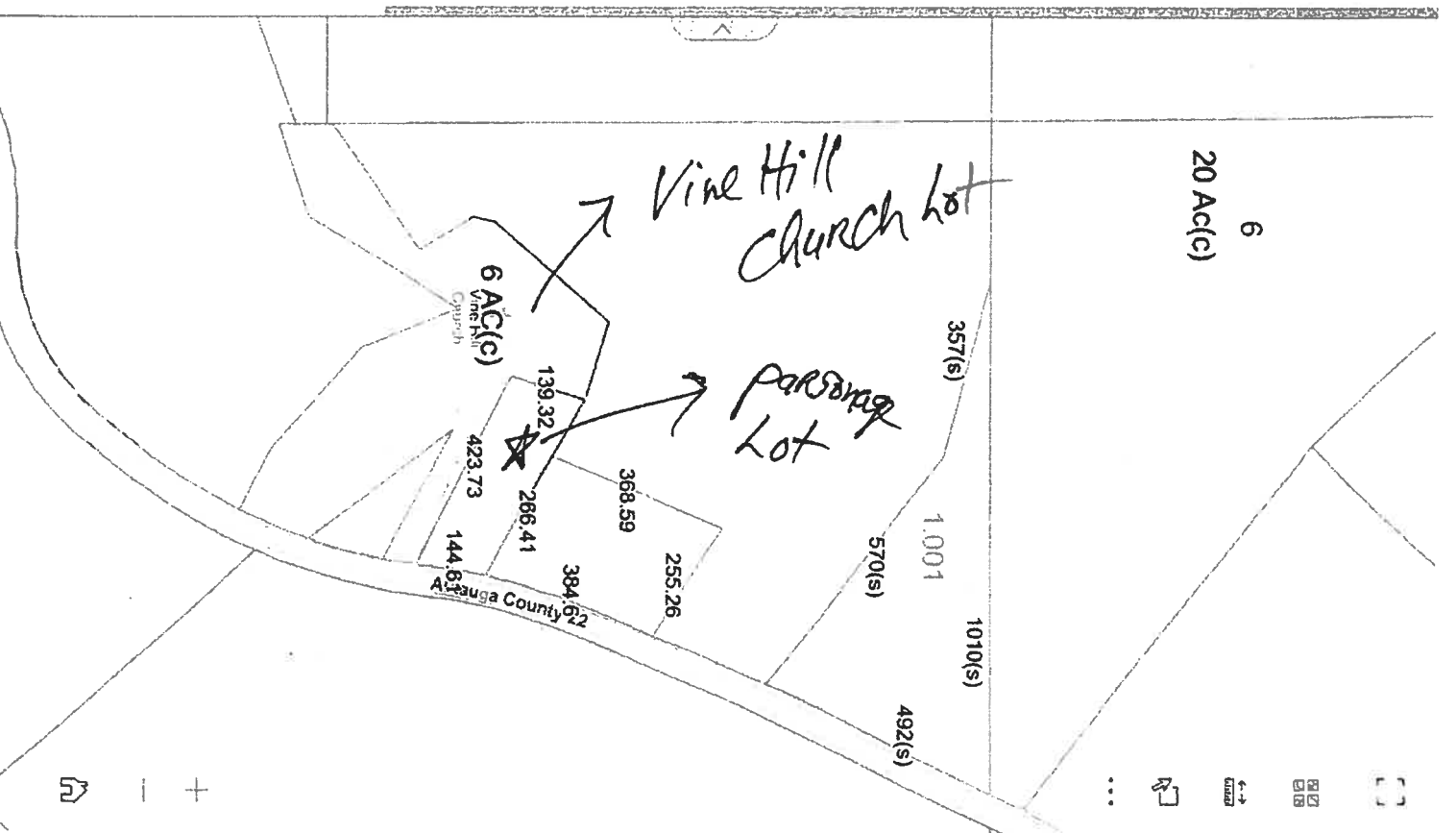
\$0.00

Total Due

\$0.00

Total Paid

\$0.00



**Owner:**

VINEHILL PRESBYTERIAN  
CHURCH

**Parcel #:**

05 04 20 0 000 001.003

**Appraised Value: \$9,700**

**Mailing Address**

4223 COUNTY RD 22  
PLANTERSVILLE AL 36758

**Tax Year** 2024

**Property Class** 2

**Exempt Code** 5

**Neighborhood:**  
CRES0003

**Municipality** 04 - COUNTY DIST  
2

**Subdivision:**

NOT DEFINED

**School District** 02

**Acreage:** 1.320 **Section:** 20

**Township:** 19N **Range:** 12E

**Disability Code**

**Over 65 Code**

**Total H/C Area** 0 Sqt

**Metes and Bounds:** PARSONAGE LOT OF THE VINE HILL PREBYTERIAN  
CHURCH LOT ALL MEASUREMENTS ESTIMATED LESS AND EXCEPTED OUT OF  
2005-7562 AND BOUNDARY TAKEN FROM SURVEY WO CRISSOM

*belongs to  
Pres bytner*  
*★ 5/11/15*

Church & Cemetery

**Owner:**

BAGLEY FRANK E  
CEMETARY ASSOCIATION

**Parcel #:**

05 04 20 0 000 001.002

**Appraised Value: \$48,100**

**Mailing Address**

1480 COUNTY RD103  
PLANTERSVILLE AL 36758

**Tax Year**                      **2024**

**Property Class**                      **2**

**Exempt Code**                      **5**

**Municipality**                      **01 - COUNTY DIST**  
**1**

**Subdivision:**  
NOT DEFIND

**School District**                      **01**

**Acreage:** 5.900      **Section:** 20

**Disability Code**

**Township:** 19N      **Range:** 12E

**Over 65 Code**

**Total H/C Area**                      **0 Sqft**

**Metes and Bounds:** CEMETARY

Send Ad Valorem Tax Notice To:

Frank E. Bagby Cemetery Association, Inc.

John D. Blake

1480 Co. RD 103 PLANTERSVILLE

36758

STATE OF ALABAMA )  
 )  
COUNTY OF AUTAUGA )

**QUITCLAIM DEED**

**KNOW ALL MEN BY THESE PRESENTS:** That for and in consideration of the sum of Ten Dollars and other good and valuable consideration, in hand paid to the undersigned, the receipt whereof is hereby acknowledged, the undersigned, PRESBYTERY OF SHEPPARDS AND LAPSLEY, hereby remises, releases, quitclaims, grants, sells, and conveys unto FRANK E. BAGBY CEMETERY ASSOCIATION, an Alabama corporation, without any warranty or representation of any kind, all of their right, title, interest and claim in or to the following real estate situated in Autauga County, Alabama to wit:

Begin at an old stone monument marking the Southeast corner of Lot 241 according to the Map of Vine Hill Land Company recorded in the Probate Office of Autauga County, Alabama; thence run South for 92.0 feet to an old stone monument; thence run North 71 degrees East for 191.0 feet to a corner; thence run North 31 degrees 23 minutes 06 seconds East for 345.29 feet to an old stone monument; thence run South 22 degrees 06 minutes 26 seconds East for 209.02 feet to a corner; thence run South 49 degrees East for 260.0 feet to a corner; thence run South 63 degrees East for 170.0 feet to a corner on the West margin of an Old Road; thence run Northeasterly, along said Road margin, for 145.0 feet to a corner; thence run North 37 degrees 30 minutes West, along the South line of Lot 104 of said Vine Hill Land Company, for 362.0 feet to a corner; thence run South 61 degrees 30 minutes East, along the North line of said Lot 104, for 294.0 feet to a corner on the West margin of an Old Road; thence run Northerly, along said Road margin, for 210 feet to a corner; thence run North 61 degrees 30 minutes West for 396.0 feet to a corner; thence run North 73 degrees West for 160.0 feet to a corner; thence run South 41 degrees 15 minutes West for 295.5 feet to a corner; thence run South 12 degrees West for 47 feet to a corner; thence run South 31 degrees East for 127 feet to corner; thence run South 54 degrees 30 minutes West for 299.0 feet to the point of beginning.

The above described property contains 7.0 acres, more or less, less and except the 1.0 acre Parsonage Lot, and lies in the East half of the Northwest Quarter of Section 20, T 19 N, R 12 E, Autauga County, Alabama.

According to a map of a retracement survey of said property as shown on the Vine Hill Land Company Map, as recorded at RLPY 0133, page 0530 in the Probate Office of Autauga County, Alabama

**TO HAVE AND TO HOLD** unto the said FRANK E. BAGBY CEMETERY ASSOCIATION forever. The undersigned are executing this Deed in their role as Trustees only and incur no personal liability as a result thereof.

IN WITNESS WHEREOF, two of the Trustees of the Presbytery of Sheppards and Lapsley have hereunto set their hands and seals, this the 12<sup>th</sup> day of July, 2005.

Jerry Vandegrift  
Trustee for Presbytery of  
Sheppards and Lapsley

[Signature]  
Trustee for Presbytery of  
Sheppards and Lapsley

STATE OF ALABAMA

COUNTY OF JEFFERSON

I, Tracy G. Evans, a Notary Public, in and for said County in said State, hereby certify that Anne W. Mitchell, whose name as Trustee of Presbytery of Sheppards and Lapsley, is signed to the foregoing conveyance, and who is known to me, acknowledged before me on this day that, being informed of the contents of the conveyance she, as such officer and with full authority, executed the same voluntarily for and as the act of said Corporation.

Given under my hand this the 12<sup>th</sup> day of July, 2005.

Tracy G. Evans  
Notary Public  
My Commission Expires: NOVEMBER 22, 2008

STATE OF ALABAMA

COUNTY OF JEFFERSON

I, Tracy G. Evans, a Notary Public, in and for said County in said State, hereby certify that JERRY VANDEGRIFT, whose name as Trustee of Presbytery of Sheppards and Lapsley, is signed to the foregoing conveyance, and who is known to me, acknowledged before me on this day that, being informed of the contents of the conveyance he, as such officer and with full authority, executed the same voluntarily for and as the act of said Corporation.

Given under my hand this the 12 day of July, 2005.

Tracy G. Evans  
Notary Public  
My Commission Expires: Nov. 22, 2008  
MY COMMISSION EXPIRES NOVEMBER 22, 2008

This instrument prepared by  
(without benefit of a title search)  
Anne W. Mitchell, Esq.  
Baker Donelson Bearman Caldwell & Berkowitz, P.C.  
420 No. 20th St. Ste 1600  
Birmingham, Alabama 35203

**BAKER  
DONELSON**  
BEARMAN, CALDWELL  
& BERKOWITZ, PC

SOUTHTRUST TOWER  
420 TWENTIETH STREET NORTH  
SUITE 1600  
BIRMINGHAM, ALABAMA 35203  
PHONE: 205.328.0480  
FAX: 205.322.8007

[www.bakerdonelson.com](http://www.bakerdonelson.com)

ANNE W. MITCHELL  
Direct Dial: 205.250.8308  
Direct Fax: 205.488.3708  
E-Mail Address: [amitchell@bakerdonelson.com](mailto:amitchell@bakerdonelson.com)

August 18, 2005

Mr. Jerry Vandegrift  
3432 River Bend Road  
Birmingham, Alabama 35243

Re: Deed to Vine Hill Church Property

Dear Jerry:

Enclosed for your records is a photocopy of the Deed from the Trustees to the Frank E. Bagby Cemetery Association, showing the recording information.

Sincerely,



Anne W. Mitchell

AWM:klb

B AWM 682334 v1  
1030664-000001 08/17/2005

Committee on Nominating and Representation  
Report to PSL Stated Meeting - May 15, 2025

**For action:**

The Committee nominates the following to fill new terms as indicated:

Anti-Racism Committee  
Class of 2026  
Sam Hamilton-Poore\*

Respectfully submitted,  
Rick Atkerson  
Moderator

**For information:**

If you are interested in any position, or wish to recommend someone, please contact any member of the Committee on Nominating and Representation:

Class of 2025  
Debra Love  
Jenny Thagard  
Rick Atkerson\*

Class of 2026  
Madison Roberts\*  
Kathy Tracey  
Lee Walthall

Class of 2027  
Caroline Kelly\*  
Jim Holland  
Ron Parsons



LIVING RIVER  
A RETREAT ON THE CAHABA

May 2025  
Newsletter



### The Transformative Power of Summer Camp

As Living River prepares for Summer Camp, one of our biggest tasks is to create an effective schedule for counselor training, full of hands on practice, meaningful learning, and outside experts on topics ranging from archery to child development. In meeting with Jermaine Wall, a licensed social worker and therapist, to prepare for his upcoming time with Living River's counselors during their training, he said, **"What you're trying to do is create a little slice of heaven on earth for kids and youth..."** He gets it! Yes! Living River prays, in the same way Jesus taught us, that "God's kingdom will come, and that God's will be done, on earth as it is in heaven." And, we may be biased, but we really believe in the unique ability of Summer Camp to help achieve, "generations assured of God's love for them and caring for creation" (Living River's vision).

The ACA (American Camp Association) vision is, "Building a world of belonging and growth." They explain, **"The heart of the camp experience is built on a foundational expectation that we all deserve the opportunity to feel like we belong.** Camp is about fostering a safe environment where every camper feels valued, accepted, and celebrated for who they are. In a world that often emphasizes differences, camps have been a sanctuary where they're viewed as strength."

At Living River, campers experience:

- Consecutive days without screens and most technology
- An abundance of time in nature
- Opportunities to build confidence like- managing one's belongings, becoming a part of a small group community, and trying new skills
- Unique camp traditions that turn into lifelong memories and reminders about their belonging to this world and God's love for them
- New friendships and lots of fun like- canoeing, archery, disc golf, hiking, fossil hunting, swimming, fishing, games, crafts, and more!





**Summer Camp is right around the corner!**

Please share about the opportunity and impact of **Living River Summer Camp** with your grandchildren, neighbors, friends, and family. Living River needs your help growing its Summer Camp program and reaching more families. All kids and youth are welcome!

There are only a few scholarships left through the Presbytery of Sheppards and Lapsley. They are first come, first serve. Additional scholarship is available through Living River.

**Visit [www.livingriver.org](http://www.livingriver.org) for more information and to register.**

**THANK YOU to all who donated to Living River's Scholarship Fund for Summer Camp 2025-**

Independent Presbyterian Church, the Presbyterian Women of South Highland, Michael and Gillian Goodrich, and other individual donors. The Scholarship Fund will fund up to 24 campers from Wilcox Co. and provide additional scholarship to any camper family who may need it.

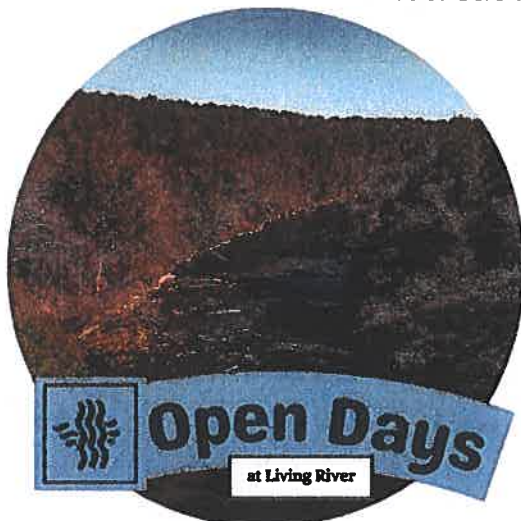
**Rising high school juniors or seniors can be a Counselor in Training (CIT)!** High schoolers can be CITs at any Elementary or Creative Camp. It's a great opportunity to learn, build confidence, make new friends, and form lasting memories! Visit our website for more information.

**Save the Date! Fall River Fest, 2025- Sunday, Oct. 19**

A day of fellowship, recreation, environmental partners, worship, and creative opportunities! Fall River Fest is a great opportunity for congregations to experience Living River together- benefiting from time in creation and community building together and across the presbytery. In years past, some congregations have canceled their normal worship in order to experience Fall River Fest together while others have joined the festivities after normal worship is over. This event is free and open to the general public!



**Join us this year for Living River's annual Cahaba Lily Adult Retreat for outdoor, spiritual, and creative exploration, May 16-18!**



**Or, for the first of Living River's new Open Days on May 17.**

Once a month, starting in May, Living River will be totally open to the public for general recreation. Find all the dates and more information at [www.livingriver.org](http://www.livingriver.org).

## Living River's Financial Health Year-to-date

Budget Report			
Sources of Funds	3/31/2025		2025 Annual Budget
Program	33,030	25%	132,800
PSL - Trinity Property	8,379	25%	33,504
Donations	31,057	15%	207,000
Designated gifts for camp	3,500	20%	17,600
Grants	48,000	100%	48,000
Other	1,136	5%	24,390
Total	\$ 125,102	27%	\$ 463,294
<b>Uses of Funds</b>			
Personnel & Fees for Services	49,748	20%	245,377
Program Expenses	2,829	5%	52,800
Facilities	40,150	37%	109,228
Mortgage Payments	7,539	23%	33,504
Administration	5,393	27%	19,797
Total	\$ 105,659	23%	\$ 460,706
Sources minus uses	\$ 19,443		\$ 2,588

Statement of Financial Position			
	3/31/2025		12/31/2024
<b>Assets</b>			
Operating Account	\$ 102,275		\$ 100,220
Capital Account	353,670		316,959
Other Current Assets	-		8,349
New Covenant Endowment Fund	449,695		458,695
New Covenant Scholarship Fund	8,796		8,971
Fixed Assets - Net	6,670,357		6,670,358
Total Assets	\$ 7,584,793		\$ 7,563,552
<b>Liabilities</b>			
Accounts Payable	\$ 2,377		\$ 2,490
Program Deposits	8,080		6,080
Payroll Liabilities	3,895		4,630
Oakworth Mortgage	97,803		104,212
Total Liabilities	112,155		117,412
<b>Net Assets</b>			
Net Assets	7,472,638		7,446,140
Total Liabilities and Net Assets	\$ 7,584,793		\$ 7,563,552

## Living River needs Bedrock Sustaining Donors

Did you know Living River's income comes 75% from its programs and annual donations. Living River depends on its generous donors to sustain and grow its programs each year. Will you consider becoming an annual donor to Living River? Could you increase your annual giving?

**Living River stewards a sacred place, 440 acres and its facilities on one 4.5 miles of one the most biodiverse rivers in North America, the Cahaba River.** You can help care for this corner of creation and welcome more of our neighbors for transformational, spiritual experiences.

Become a Bedrock Donor by giving a minimum of \$25 a month or \$300 annually, strengthening Living River's foundation! Donations can be made online or by mailing a check. Sustaining Donors will be recognized annually, first-time donors with a beautiful glass piece like the one pictured right by artist Sherri Van Pelt. **You can find more information about the Bedrock Donor program on Living River's website under "Donate."**



## Southern Pine Beetles Hit Living River

Living River's property was a mining operation in the late 19<sup>th</sup> and early 20<sup>th</sup> centuries. As a part of mine reclamation, the state aerial seeded pine over much of Central AL. Living River's pine stand had been in need of thinning, therefore, it was very vulnerable when the Southern Pine Beetle epidemic hit Alabama last Fall. Today, Living River's Southern Pine Beetle infestation is under control. Thank you for supporting Living River and the work it takes to responsibly steward its property!





## Executive Director's Corner

Spring is that time of the year in the camp and retreat world when time speeds up. **We're barreling toward Counselor Training and Summer Camp, and I've never been more excited.** We have had the full summer staff in place since March 3, with 10 out of the 12 counselors hired before Christmas. Rachel and I had a productive planning weekend with our two head counselors, Brooke Satterfield and Thomas Reed, both of whom are former campers and counselors. **We are excited and ready to see the amazing ways that God will be at work with our campers and counselors this summer.**

Our retreat guests have continued to find renewal and enrichment at Living River. **January through May has brought 17 different organizations to Living River for retreats** including the following: FPC Auburn Women, Presbyterian House University of Wisconsin, Madison; Central Presbyterian, Atl.; FPSL Confirmation Retreat, Living River Board Retreat, Bama Catholic, PSL Youth Council Retreat, Alabama Meditation Network, Restorative Yoga, Levine Academy, Dallas, TX; Edgewood Presbyterian Women, LR Spring You and Me Retreat, Kairos Outdoors, Peace at Any Pace, California; Cahaba Lily Retreat, Cahaba Riverkeeper Environmental Leadership Retreat for High School students, and Shepherd of the Valley Presbyterian Church (ECO), McCalla.



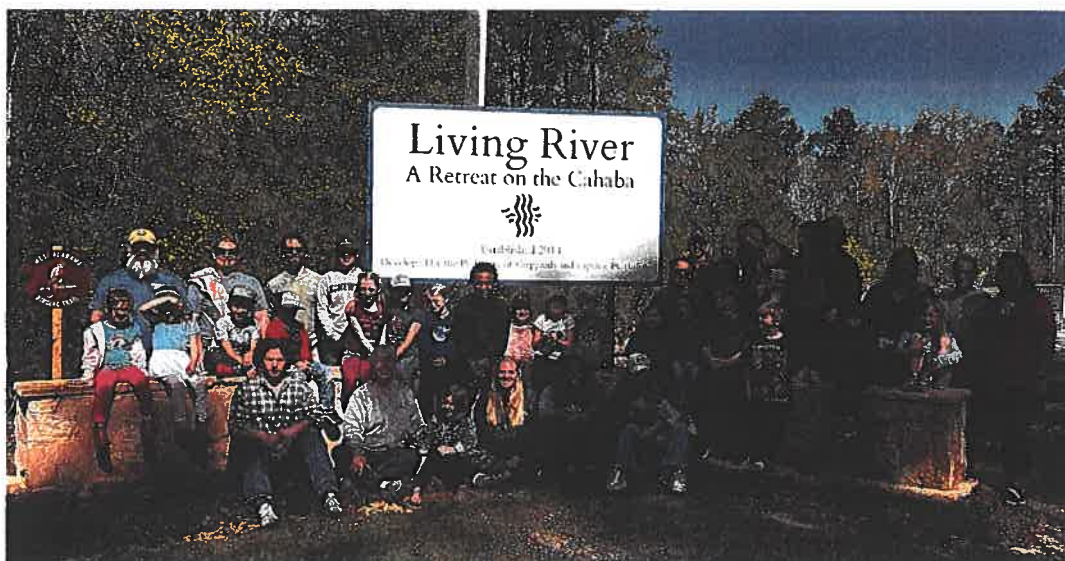
**Please continue to spread the word with those you know about the summer camp and retreat possibilities at Living River. You are our greatest asset in sharing with others about Living River.**



LIVING RIVER

A RETREAT ON THE CAHABA

2000 Living River Parkway  
Montevallo, AL 35115



# Presbyterian Home *for* Children

*Raising hopes, growing confidence and nurturing faith since 1868*

Post Office Drawer 577 • Talladega, Alabama 35161

Telephone: 256.362.2114 • Fax: 256.362.6265 • E-mail: [info@phfc.org](mailto:info@phfc.org) • Website: [www.phfc.org](http://www.phfc.org)



MR. DOUG MARSHALL  
President/CEO

April 25, 2025

Dear Friends in Christ:

Again and again, we are deeply grateful to the Presbytery of Sheppards and Lapsley for your prayers, encouragement and support of the Presbyterian Home for Children. Each day, lives are being impacted at and through the Home. Thank you all for helping make that happen!

By the time of the Presbytery Meeting, we would have opened the Robinson Family Unity Center on campus as an extension of our Secured Dwellings Program. This Cottage will house single moms who have lost their children to DHR due to unsuitable housing. We are going to work with these moms to get their children back so that these families can live in our other Secured Dwellings Cottages or live in safe and affordable housing off campus. Sharon Moore, VP of Transitional Housing and Family Services recently met with the County DHR offices for Talladega, Calhoun and St. Clair Counties. Housing for these moms is a huge need, and we were warmly received for this new extension of our ministry.

Our Caminos® program launched in 2024 to serve unaccompanied immigrant minors living in Alabama, the Southeast and beyond with both home studies and case management services to help provide family reunification and protection for these minors from abuse, exploitation and trafficking. Please keep us in your prayers as we navigate the new directives coming out of Washington.

Ascension Leadership Academy is one of 200 schools which qualify for Choose Funding beginning this next school year. While this new Choose Funding won't completely fund the operations of Ascension, it could still be a very important component of our cash flow in addition to dedicated fundraising to support the life changing work that happens through our fully Cognia accredited K-12 school. We always welcome guests to come visit Ascension and the Home. Please reach out to Suzanne Cornett, Senior Manager of Development and schedule a visit.

As you are aware, the Home grew its outreach mission ministry in 2024 in partnership with a small nonprofit serving children in poverty in Pine Hill, Alabama. The Home, along with M.I.N.D. Mentoring in New Dimensions, started a Weekend Backpack program in September that sends two meals and healthy snacks home with 40 children in the most need at FS Ervin Elementary School in the Wilcox County Schools system every week. It is part of an effort to expand our impact on children and families living in poverty in the poorest region in Alabama located three hours from our Talladega campus. We are now starting a Caring Closet at FS Erwin with plans to expand to the other two elementary schools in Wilcox County. The Caring Closet will include extra uniform shirts, pants, underwear, undershirts, socks, washcloths, soap, deodorant, and toothbrushes along with a new washer and dryer. On May 8<sup>th</sup>, we will have given away hundreds of new Nike shoes (that we secured FREE) at the Wilcox middle and high schools to strengthen the relationship with the community. On the following day of May 9<sup>th</sup>, we will have our end of the year school party in Pine Hill.

Again, we are so grateful for the two large gifts from within the Presbytery of Sheppards and Lapsley: \$280,000 over three years from the Calhoun Presbyterian Foundation for deferred maintenance on our historic campus and \$300,000 from Second Presbyterian Church for a new duplex now completed at Union Village, our permanent supportive housing community with full wrap-around program support from the Alabama Institute for Deaf and Blind for adults who are deaf, blind, deafblind and multi-disabled. Both of these gifts will greatly expand our ability to serve vulnerable individuals entrusted to our care.

We have just featured Sharon Moore for her 40 years of serving children and families in our Spring Beginnings Newsletter. I have included that article here. Please help us celebrate Sharon Moore as we thank God for her being such a special part of the Home!

Blessings

Doug Marshall





## SHARON MOORE CELEBRATES HELPING CHILDREN FOR 40 YEARS AT PHFC

The role of the Presbyterian Home for Children has changed over the last four decades, and Sharon Moore's career as a social worker changed with it. But one thing hasn't changed.

"I love the Home," Moore said. "I love it." She will mark her 40th year at the Presbyterian Home for Children on Oct. 31.

Moore came to the Presbyterian Home for Children "fresh out of college" with a bachelor's degree from Alabama State University. She started out working with adolescent girls, and after earning her master's degree in social work from The University of Alabama, she became a supervisor. She worked in several programs at the Home during her career, and she now serves as Vice President of Transitional Housing and Family Services and the Director of Family Bridges Program for the Home.

When she started, the Home continued to provide residential care for decades to children in custody of the Alabama Department of Human Resources and was always known as the "Cadillac" among group homes. About 10 years ago, many of the kids required more intensive care than the Home could

provide, and DHR moved toward placing children with families rather than in group homes like PHFC.

In response to these changing circumstances, the Home pivoted from residential care for children to what Moore described as "serving single moms and female caregivers with children that need safe and secure housing with program supports." The Home has been providing hope and healing to moms and children through the Secure Dwellings program for those same 10 years, and the program has expanded to take up to 40 children and 24 female caregivers at the Talladega campus.

"It's another set of population," Moore said. "It was sad to see the old program go, but we had to change to meet the new and pressing needs of children and families."

The Home's previous mission remains alive with the annual Alumni Day reunion of children – now adults – who once called the Home home. Every summer, the alumni come back to

campus to reminisce, sift through old photos, play games, and see what new projects are helping children in need at Home of today.

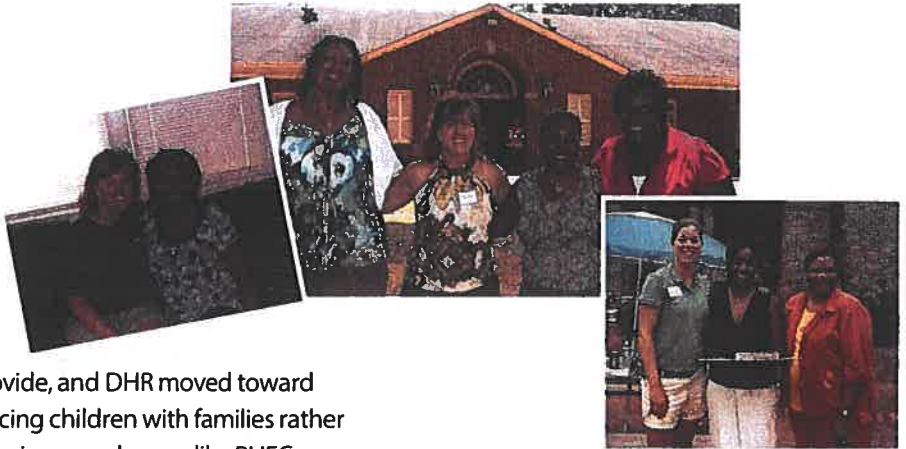
Whether serving children removed from troubled homes as in the past or its current mission of helping families seeking housing and care, the Home's clients have one thing in common: trauma. And for over a century, the Home's trained social workers – like Sharon – have worked hard to give what they all need: safety, security, and love.

"It's traumatic for a child to be moved to a place you've never been to and to trust that strangers will take care of you when the people you loved didn't do it," Moore said.

Mothers and their children sometimes come to the Home after living in their car or after staying at the homes of families and friends.

"It's traumatic to lose your house and to live in a car or to be couch surfing," Moore said. "People will only put up with you for so long, especially if you have children. It works on your self-esteem."

Moore said, "Trauma affects behavior. Social workers help clients manage some behaviors. I say social workers are more focused, more aware of trauma." And social workers know how to help their clients access resources from DHR and nonprofits.





Homelessness has always been a problem, but Moore said it seems to be a growing issue because it costs more for a family to survive.

Through it all, there have been many success stories. Moore recalled working with a young client who was "a fighter. He'd fight at the drop of a hat." During a counseling session, he revealed that he was beaten often in his youth. "He said, 'Nobody's ever going to beat me again. I'll go down fighting.' We were able to start a meaningful conversation. He went on to be successful and a great dad."

A young lady graduated from the Home and went on to work in her field of study and is doing quite well. Another went on to own her own place, and her daughter earned a master's degree.



"Your heart does a tap dance when you had a small part of someone's success, when you saw where they came from," Moore said. "You had a small part. They did the work, but you provided some resources, some guidance. Your heart just does a tap dance."

In her 40th year at the Home, Moore said she is happy with her career choice. "I wanted to be in some helping profession," she said. "This is where I landed, and I love it. I have a passion for it. It requires a lot of 'above and beyond.' It would be very difficult for me if I didn't have a good support system."

PHFC President Doug Marshall said the Home has been blessed to have Moore on staff for four decades, bringing her leadership, wisdom and experience to the Home's critical, life-changing programs.

"Sharon is heart driven and is one of the most genuine and caring individuals that I have ever worked with in my entire career," Marshall said.

As a career social worker, Moore said she would recommend the field to anyone, "but not if you're coming because you think you'll make a lot of money," she



joked. "Social work is good if you want to make a change in someone's life and be impactful, and you want to try to change the world. But don't be disappointed if you can't save everybody. If you can save one person, that's a success."

"Why some overcome their circumstances, and others do not is in God's hands," Moore said. "But some people have a problem relating to God. They wonder why God let these bad things happen to them. It comes down to whether the resolve is in the person to make them want to do better."

## PRESBYTERIAN HOME FOR CHILDREN NEW HIRES



**Darea Whitson Lebon** rejoined the Presbyterian Home for Children as Transporter and Assistant to Sharon Moore, Vice President of Transitional Housing and Family Services. Lebon previously worked for the Home in the Moderate Care program from 2017-2021. Lebon is a Talladega native who enjoys helping her community and others.



**Marco Wissner** has joined the Home as Lead Case Manager in the Caminos® program. Wissner has seven years of experience working as a case manager with the U.S. Office of Refugee Resettlement under the U.S. Department of Health and Human Services, which oversees the Home's Caminos® contract. Wissner is originally from Hermosillo, Sonora, Mexico and earned a bachelor's degree in psychology from the University of Sonora in 2012. He began his career as a Social Worker at the Sonora State Youth Detention Center before relocating to Tucson, Arizona, in 2017. In March 2018, he started working as an ORR Case Manager in Phoenix. In October 2023, Wissner moved to Greensboro, NC, where he worked as a Case Manager at an ORR Emergency Shelter. In June 2024, he transitioned into ORR Post-Release Services case management in North Carolina, which is what he does now at the Home. Wissner said he is passionate about helping clients access the resources and support they need and is excited to bring his experience to PHFC and make a positive impact with the team.

## Stated Clerk Report May 15, 2025

### Omnibus Motion:

1. To approve the minutes of the February 20, 2025 meeting
2. To approve the requests for absences from today's meeting
3. To adopt an "Electronic Meetings Rule" for this meeting so that virtual attendees seeking recognition from the Chair be allowed to unmute themselves and call for the attention of the Moderator for recognition and obtaining the floor.
4. To approve the minutes of the Commission of the Presbytery to install the Rev. Nicole Newton as Associate Pastor of the Independent Presbyterian Church on March 2, 2025.
5. To accept these invitations to host meetings of the Presbytery: on August 21, 2025, at the First Presbyterian Church of Birmingham; on November 20, 2025, at Edgewood Church .

### For Information:

1. The Stated Clerk continues to review Session minutes, and is planning gatherings of clerks and pastors for reading and support. If your Minutes have not been reviewed, [a] you may drop them off at the presbytery office or, [b] call the Stated Clerk to initiate conversations a how to send or bring them to the office. Or, [c] you may use the attached form and do a check list of your own minutes, print, sign, scan, and email them to: [statedclerk@pslpcusa.org](mailto:statedclerk@pslpcusa.org)

The following Session minutes have been read this year:

Westminster, Tuskegee;	Westminster, Birmingham;
Church of the Covenant, Anniston;	First Presbyterian, Jacksonville;
Valley Creek Church, Selma;	First United, Forestdale.
Riverchase, Birmingham	Oakmont Chapel, Birmingham
South Highland, Birmingham	

2. Our Per Capita Assessment for 2025 is \$28.42. Of this \$10.84 goes to the General Assembly; \$3.98 to the Synod of Living Waters; \$12.60 to the Presbytery of Sheppards and Lapsley; and \$1.00 to Campus Ministry. What difference does your per capita giving make? It makes possible our quarterly meetings where the well-being of the church is addressed, where ministers are received, where the mission of our congregations is celebrated, where connections with Living River, the Presbyterian Home for Children, and the Congo Partnership are renewed.
3. Our policies call for background checks, boundary training, and anti racism training to be done every three years. The only exemption is for those who are no longer engaged in ministry or who have a documented background check within the last three (3) years. Please contact the Stated Clerk with any questions or concerns you have in regards to background checks.
4. Important news for every Session: The PC(USA) approved a change in our Book of Order which applies to all of our sessions: "All councils shall adopt and implement the following policies: a sexual misconduct policy, a harassment policy, a child and youth protection policy, and an antiracism policy. Each council's policy shall include requirements for boundary



training which includes the topic of sexual misconduct, and child sexual abuse prevention training for its members at least every thirty-six months. A council may delegate aspects of its tasks to such entities as it deems appropriate, provided that those entities remain accountable to the council." (Book of Order G-3.0106) .

Your Session determines how this requirement is to be met. Your Session is free to adapt Presbytery policies, or policies and practices of other congregations. For example, the Presbytery runs background checks through Praesidium, which is related to our insurance company, and we can do those for your church. Send me an email with names and emails of elders and staff. The boundary training requirement may be met by a Zoom training program by one of our elders. The link for that is: <https://form.jotform.com/232904765254157> A similar training program from the Anti-Racism Committee is in the works. Contact me or your liaison from COM if you have questions. You can find the file of the relevant Presbytery policies on our website that you are welcome to use as resources.

**For action:** Administrative Commission Reports:

A. First Presbyterian, Anniston: The Session of FPC-Anniston respectfully requests that the appointed Administrative Commission be dissolved, effective May 15, 2025. The Session is grateful for the faithful service and sound advice of the Commission.

B: The Administrative Commission of Providence Presbyterian Church of Montgomery requests that the Presbytery of Sheppards and Lapsley approve dissolution of the congregation, if way be clear, once the real estate transaction and all legal matters pertaining to dissolving the church are completed.

The 2024 Statistical Report of churches is attached.

**Administrative Commission Report****FPC-Anniston****Presbytery Meeting, May, 2025**

- January, 2025 – The CEO of the Community Foundation of NE Alabama, Moderator of the Session, and church volunteers met throughout the month of January to review church historical documents and church possessions.

Church paraments and other pieces used in the sanctuary were distributed to various churches within the Presbytery. Furnishing and office furniture will be donated to community not-for-profits. Pew Bibles had been distributed during the construction process. Hymnals are the older versions and not requested by others.

- February, 2025 – Purging continued throughout the month, concentrating on floral pieces and containers that had been used in worship. These materials will also be offered to not-for-profits. The CEO, Moderator, and a volunteer thoroughly reviewed historical documents. Many were donated to the Anniston Library. The remainder were sorted according to directions from the PCUSA Historical Library in Philadelphia, PA.
- March, 2025 – Sorting and re-sorting continued to be certain that all pertinent documents were being retrieved. Relevant documents per the Historical Library's guidelines were placed in sturdy shipping boxes and labeled. Five (5) boxes were sealed and delivered to UPS to be shipped on to the Historical Library. A Session member delivered the boxes and donated the cost of shipping to the church account.
- The Session of FPC-Anniston respectfully requests that the appointed Administrative Commission be dissolved, effective May 15, 2025. The Session is grateful for the faithful service and sound advice of the Commission.
- The Session will meet in early May to determine recipients of remaining funds. The Session will plan a "garden party" at the church for members and friends.

Respectfully submitted

Frankie Tatum, CLP

Moderator of Administrative Commission and the Session

Administrative Commission Report to Presbytery  
Providence AC  
May 15, 2025

The Providence Presbyterian Church Administrative Commission has had several meetings since our last report. The AC has been a sounding board for Providence Session as they proceed with plans for final worship and closing of the church. The final worship service was held on Sunday, April 27, 2025.

Due to the confirmed fact that Providence as a PCUSA Congregation functions under the “Southern Option” regarding property, the AC has served in an advisory capacity only regarding possible sale of the church property. The AC has focused its attention on identifying legacy ministries Providence wishes to fund and / or support with any proceeds from the sale of its property. Providence Session and the AC have sought the advice and guidance of both The Presbyterian Foundation and its real estate wing, Foundry Commercial, and those resources have been essential to the progress made.

The following represent the plan for dissolution approved by Providence Session and the congregation respectively:

- The congregation approved dissolving Pastoral Terms of Call with Rev. Nan Adams effective April 30, 2025. COM will appoint a Moderator for Session beginning May 1<sup>st</sup>.
- The Providence Day School will be permanently closed on the last day of the semester, which is May 23<sup>rd</sup>. Staff are assisting parents with identifying other options for Day School services for the fall. Staff will all be paid a bonus at the time of closing.
- Session and Rev. Adams are contacting all remaining members of Providence to discuss options for worship and transfer of membership following dissolution.
- Session approved the establishment of a Line of Credit with their existing bank in order to maintain a positive cash flow, if needed, during the time period of finalizing the property sale.
- The congregation voted to empower Providence Session to proceed with two separate offers for the real property and to see the best offer through to closing. The proceeds of the sale will settle all remaining financial obligations of Providence Presbyterian Church and all remaining proceeds will be distributed as legacy ministry funding to recipient organizations / ministries as directed and approved by Session.

**MOTION:** The Administrative Commission of Providence Presbyterian Church of Montgomery requests that the Presbytery of Sheppards and Lapsley approve dissolution of the congregation, if way be clear, once the real estate transaction and all legal matters pertaining to dissolving the church are completed.

Respectfully submitted,

Wes Padgett – Elder, Providence, Krysten Holloway Scrivner – Elder, Westminster Birmingham  
Jerry Sailor – Elder, Providence, Sue Westfall – General Presbyter, PSL  
Jonathan Yarboro – Pastor, First Wetumpka

## THE PRESBYTERY OF SHEPPARDS AND LAPSLEY

### Presbyterian Church (U.S.A.)

#### Annual Review of Session Records – Checklist

**TO THE CLERK OF SESSION AND MODERATOR:** Thank you for your important service in maintaining accurate records. The purpose of this list is to aid you and the reader in finding some items to be verified in minutes, rolls, and registers. Please complete this checklist *before* the review and by including date and page numbers where appropriate. For items that occur regularly (e.g., opening and closing with prayer), the date and page# column may simply give a single representative example. *You do not need to list every occurrence of the item.*

If events, such as regularly scheduled observances of the Lord's Supper or election of a clerk for more than a one-year term, have been approved by previous sessions and no change has been made, check the "N/A" column, and under "Date and Page #," either note the reference from when the action was last taken (if it is in the same minute book), or write "Prior Action." If the authorization of such events is by rule in the session's *Manual of Administrative Operations*, then write "Manual" in the "Date and Page #" column.

Congregation Name: \_\_\_\_\_

Dates Covered in Review: \_\_\_\_\_

	Requirement	YES	NO	N/A	DATE AND PAGE #
1	Stated meetings were held at least quarterly with the date, time, and place of meeting being recorded. [G-3.0203]				
2	Minutes record whether meetings were special (called) or regular (stated), and the purpose for which special meetings were held is stated. [G-3.0203]				
3	Meetings were opened and closed with prayer. [G-3.0105]				
4	Minutes record the approval of minutes from the previous meeting either as distributed/read or as corrected. [G-3.0107]				
5	Minutes are signed by the clerk for the meeting				
6	The session authorizes all observances of the Lord's Supper, which is celebrated at least quarterly. [W-3.0410]				
7	The session authorizes all baptisms, which are appropriately recorded in minutes, rolls, and registers. [G-3.0204, G-1.0401]				
8	Minutes record the reception and dismissal of members and by what method they were received or dismissed (profession, reaffirmation, transfer, removal), and these actions were duly recorded in rolls and registers. [G-3.0201c, G-3.0204a]				
9	Minutes record the approval of all marriages performed in the church's facilities. [W-4.06]				

	Requirement	YES	NO	NA	DATE AND PAGE #
10	The session reviewed the roll of active members and counseled with those who neglected membership responsibilities. [G-3.0201c]				
11	Names were appropriately deleted from the roll or moved to an informal list of inactive members. [G-3.0204a]				
12	Commissioners to were elected for presbytery meetings, and they report to the session after the meetings. [G-3.0202a]				
13	Special offerings were approved by the session. [G-3.0205]				

14	Those responsible for various congregational funds reported to the session at least annually. [G-3.0205c]				
15	A Treasurer was elected for a specific term. [G-3.0205]				
16	An annual audit or review of financial records was conducted. [G-3.0205, G-3.0113]				
17	New ruling elders and deacons were trained and examined. [G-3.0201c]				
18	The ordination and installation of ruling elders and deacons – and was recorded in minutes, rolls, and registers. [G-3.0201c, G-3.0204]				
19	A Clerk of Session was elected for a specific term. [G-3.0104]				
20	At least one congregational meeting was duly called by the session and held. [G-1.0501, G-1.0502]				
21	A budget was adopted. [G-3.0113]				
22	The work of the deacons was reviewed. [G-2.0202]				
23	Terms of call for all ministers were reviewed at least annually. [G-2.0804]				
24	Property and liability coverage was obtained. [G-3.0112]				
25	The annual statistical report was completed. [G-3.0202f]				

These items must be recorded in **congregational meeting** minutes:

	Requirement	YES	NO	N/A	DATE AND PAGE #
26	Minutes of congregational meetings are signed by the secretary of the meeting.				

27	A Nominating Committee was elected. [G-2.0401]				
28	Church members were elected for ordered ministries (Ruling Elders, Deacons) [G-2.0404, G-2.0401]				
29	The congregation approved any decisions to buy, sell, or mortgage real property [G-1.0503d]				
30	All matters related to the calls of installed pastors were approved by the congregation. [G-1.0503c]				
31	Minutes of congregational meetings were approved by either the congregation or an entity designated by the congregation.				
32	An annual Congregational Meeting was held, with public notice given and a quorum established. [G-1.0501]				
33	Articles of Incorporation and Bylaws have been adopted and conform to the Form of Government of the Presbyterian Church (U.S.A.). [G-4.0101 and G-4.0102]				

REVIEWED BY:

Name \_\_\_\_\_

Date \_\_\_\_\_

COMMENTS: \_\_\_\_\_

\_\_\_\_\_

\_\_\_\_\_

EXCEPTIONS: \_\_\_\_\_

(Use Additional Page If Needed)

BOOK STAMPED BY: \_\_\_\_\_

## 2024 Presbytery Statistical Report

## Presbytery

Sheppards And Lapsley

## Address

3603 Lorna Ridge Dr, Birmingham, AL 35216

## Phone

205-978-0320

## Fax

205-978-0330

## Email

[psl@pslpcusa.org](mailto:psl@pslpcusa.org)

## Web Site

[pslpcusa.org](http://pslpcusa.org)**Membership**

Prior Active Members	6671	Adjusted membership	6672
<b>Gains</b>		<b>Losses</b>	
Certificate	110	Certificate	36
Youth Professions	49	Deaths	106
Professions & Reaffirmations	82	Deleted for any Other Reason	200
<b>Total Gains</b>	<b>241</b>	<b>Total Losses</b>	<b>342</b>
<b>Total Ending Active Members</b>	<b>6571</b>		

**Baptisms**

Presented by Others	59	Average Weekly Worship Attendance	2128
At Confirmation	7	Friends of the Congregation	299
All Other	9	Ruling Elders on Session	318
		Do you have Deacons? Yes / No	10 / 26

**Age Distribution of Active Members**

17 & Under	184
18 - 25	394
26 - 40	742
41 - 55	775
56 - 70	1213
Over 70	1711
<b>Total Age Distribution</b>	<b>5019</b>

**People with Disabilities**

Hearing impairment	172
Sight impairment	36
Mobility impairment	141
Other impairment	196

**Gender Distribution**

Women	3218
Men	2366
Non-Binary	9

**Youth in Congregation**

Age 4 and under	260	Middle School (6th – 8th grade)	119
Elementary School (K-5th grade)	297	High School (9th – 12th grade)	210
		<b>Total Youth</b>	<b>886</b>

**Racial Ethnic**

Asian/Pacific Islander/South Asian	105	Native American/Alaska Native/Indigenous	6
Black/African American/African	233	White	5260
Middle Eastern/North African	4	Multiracial	16
Hispanic/Latino-a	9		
		<b>Total Racial Ethnic</b>	<b>5633</b>

**Budgeted Income** 15,719,373**Budgeted Expense** 16,251,909**Receipts**

Regular Contributions	12,592,285	Bequests	329,736
Capital Building Fund	1,195,385	Other Income	1,908,381
Investment Income	2,765,146	Subsidy or Aid	52,445

**Expenditures**

Local Program	12,823,979	Investment Expenditures	195,555
Local Mission	1,760,436	Per Capital Appt	213,356
Capital Expenditures	1,893,077	Other Mission	410,330

Equip, Nurture, Connect Committee  
 Presbytery of Sheppards and Lapsley  
 March 7, 2025

Present: Jenny Thagard, Sue Westfall, Pat Goodman, Robert Newman

The meeting was opened with a devotion from the D365 Daily Devotional. D365 is a daily devotion written for youth and adults that is available by their app or email. The devotion follows a five-step format – Pause, Listen, Think, Pray, Go; and has musical accompaniment. PCUSA, the Cooperative Baptist Fellowship, and the Episcopal Church work together to support this ministry.

The following ministries are under the ENC umbrella: Main Event, Youth Council, Children's Ministry, UKirk, and Small Church.

In the area of smaller-church ministries, Pat Goodman brought our attention to a series of articles in the Presbyterian Outlook by Phillip Blackburn. He is the director of the Thriving Rural Ministry Program at the University of the Ozarks in Clarksville, Arkansas; and he and his wife, Tasha, co-pastor First Presbyterian, Fort Smith, Arkansas. We discussed bringing Phillip to our Presbytery for a workshop or retreat.

Robert Newman reported that Youth Leaders will have a Continuing Education event coming up. He also reported on the success of the Confirmation Retreat that was jointly held at Living River for churches with a small number of confirmands.

The issue of Child Protection Policies was discussed.

Next step tasks:

1. Recruit more members to the ENC Committee, and establish a class rotation.
2. In the area of Smaller Membership Churches, it was decided to contact Phillip Blackburn and check on his availability. As of the writing of these minutes he has been contacted, and is interested. We are talking about date and format.
3. Re-visit the Main Event as a vehicle to equip, nurture and connect volunteers and church professionals in our congregations.

The next meeting will be held prior to the August Presbytery Meeting when the majority of committee members can be present.

The meeting was adjourned for lunch fellowship at a local restaurant.

(If you are reading these minutes in your Presbytery packet, and this sounds like your kind of committee, reach out to Jenny Thagard at [jthagard@livingriver.org](mailto:jthagard@livingriver.org).)



The Presbytery Of Sheppards And Lapsley

Report Of The Commission on Preparation For Ministry — May 2025

INQUIRERS

Theodore Longlois  
Abby Bunn

CHURCH

Independent  
Church of the Covenant

INSTITUTION

Princeton  
Columbia

CANDIDATES

Annabelle Beavers  
Peyton Chandler  
Patrick O'Connor  
Barbara Tomek-White  
Daniel Killilea  
Teddy Vaughn

First, Tuscaloosa  
Independent, Birmingham  
Immanuel, Montgomery  
First, Auburn  
South Highland, Birmingham  
Grace, Tuscaloosa

Union (Richmond)  
Graduate - Vanderbilt  
Graduate - San Francisco  
Graduate - Austin  
Louisville  
Graduate - Columbia

**FOR INFORMATION:**

The Presbytery's Finance Committee has consented to oversee the investment of the Shades Valley funds that were donated to the CPM. These funds were designated for the benefit of candidates and inquirers and will be used to provide assistance as needed in order to support their health and wellness while under care. CPM is working to create an application process in order to make funds available.

**FOR ACTION:**

None at this time.

Submitted on behalf of the Commission on Preparation for Ministry:

Rick Atkerson (2025), Jeff Johnson (2025), Nicole Newton (2025), Kathy Wolf Reed (2026), Adrienne Stokes (2025), Lee Walthall (2026), Luke Ponder (2026), Henry Kline (2026), Cort Gatliff (2026), Emily Frandsen (2027), Clay Price (2027), and Angela Wright (2027).

Respectfully,

Rev. Nicole Newton, Moderator

## Presbyterian Women of the Presbytery of Sheppards and Lapsley

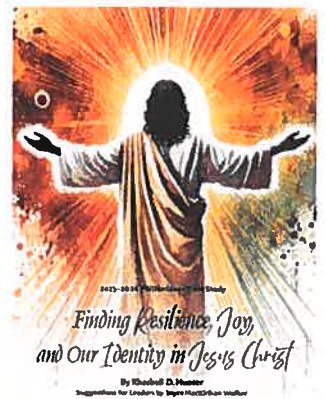
April 2025



As we wind down our study of environmental justice, covering most aspects of modern life interpreted through the lenses of the Old Testament witnesses of God's creation, we begin looking forward to the study for 2025-2026. *Finding Resilience, Joy, and Our Identity in Jesus Christ* by Rhashell D. Hunter will bring a renewed focus on Jesus through Scripture. Here is a description from the Bible Study page of the Presbyterian Women website:

"In this Bible study, we will explore resilience. This is modeled for us by several biblical characters, gospel and epistle writers, as well as Jesus. The Bible study is also about joy. How do we find joy in a chaotic world? Christian joy may be different from how a lot of people define joy. We will also seek to rediscover our identity."

We are exploring possibilities of bringing Rhashell Hunter to Sheppards & Lapsley for a day of study, encouragement and celebration in August. Stay tuned!



### Recruiting! [still!]

1. Jan Albert of Bowling Green Presbyterian Church in Kentucky is our region's representative on the PW Churchwide Search Committee. Earlier, her letter to all was shared a recent Newsletter blast; I have attached a copy for sharing with the PW groups.
2. We continue to look for a representative to the *Columbia Friendship Circle / Mission Haven*. Attached is the January Newsletter. Please me know if you or someone you know would love to support this effort. It's really a very low maintenance, but vital, Ambassadorship...sharing a few email newsletters and reminding the Presbytery to hold the CFC up in prayers as it continues to bless our future pastors and their families!
3. Coordinating Council for the PW in our Presbytery is still looking for interested women to assist in reforming PW at the presbytery level.

If anyone is interested in re-forming and re-energizing Women in the Presbytery - please let me know!

For God's Glory

Kathy Tracey, Moderator, PW [PS&L]



**Presbytery of Sheppards and Lapsley**  
**Analysis of Revenues & Expenses - Summary**  
**January to March 2025**

Accounts	MTD Actual (This Year)	MTD Budget (This Year)	YTD Actual (This Year)	YTD Budget (This Year)	YTD Budget/Actual (This Year)	Annual Budget (This Year)
<b>Revenues</b>						
General Fund	\$11,282.57	\$18,789.33	\$62,910.44	\$56,367.99	\$6,542.45	\$225,472.00
Mission Giving-Income	\$1,115.64	\$1,851.92	\$7,004.05	\$5,555.76	\$1,448.29	\$22,223.00
Per Capita Income	\$11,153.69	\$15,318.67	\$50,641.13	\$45,956.01	\$4,685.12	\$183,824.00
<b>Total Revenues</b>	<b>\$23,551.90</b>	<b>\$35,959.92</b>	<b>\$120,555.62</b>	<b>\$107,879.76</b>	<b>\$12,675.86</b>	<b>\$431,519.00</b>
<b>Expenses</b>						
<b>Council</b>						
Council Expenses-Other	\$0.00	\$931.25	\$0.00	\$2,793.75	\$2,793.75	\$11,175.00
Salaries & Allowances						
Executive Presbyter	\$10,516.07	\$10,146.59	\$30,390.24	\$30,439.77	\$49.53	\$121,759.00
Administrative Salaries	\$1,125.00	\$375.00	\$1,125.00	\$1,125.00	\$0.00	\$4,500.00
Staff Expenses	\$0.00	\$350.00	\$0.00	\$1,050.00	\$1,050.00	\$4,200.00
<b>Total Salaries &amp; Allowances</b>	<b>\$11,641.07</b>	<b>\$10,871.59</b>	<b>\$31,515.24</b>	<b>\$32,614.77</b>	<b>\$1,099.53</b>	<b>\$130,459.00</b>
<b>Total Council</b>	<b>\$11,641.07</b>	<b>\$11,802.84</b>	<b>\$31,515.24</b>	<b>\$35,408.52</b>	<b>\$3,893.28</b>	<b>\$141,634.00</b>
Equip, Nurture, Connect						
Other ENC Expenses	\$6,023.01	\$1,266.66	\$8,587.59	\$3,799.98	(\$4,787.61)	\$15,200.00
<b>Total Equip, Nurture, Connect</b>	<b>\$6,023.01</b>	<b>\$1,266.66</b>	<b>\$8,587.59</b>	<b>\$3,799.98</b>	<b>(\$4,787.61)</b>	<b>\$15,200.00</b>
Mission	\$0.00	\$12.50	\$0.00	\$37.50	\$37.50	\$150.00
UKirk Birmingham	\$0.00	\$0.00	\$0.00	\$0.00	\$0.00	\$0.00
Trustees	\$9,599.98	\$5,478.57	\$22,496.23	\$16,435.71	(\$6,060.52)	\$65,743.00
<b>Presbytery Per Capita Expenses</b>						
Stated Clerk & Moderator	\$2,308.52	\$2,546.25	\$6,468.56	\$7,638.75	\$1,170.19	\$30,555.00
Presbytery Commissions	\$0.00	\$333.32	\$0.00	\$999.96	\$999.96	\$4,000.00
Asst.to Stated Clerk/Ofc Mgr	\$5,435.55	\$5,435.50	\$16,306.65	\$16,306.50	(\$0.15)	\$65,226.00
<b>Total Presbytery Per Capita Expenses</b>	<b>\$7,744.07</b>	<b>\$8,315.07</b>	<b>\$22,775.21</b>	<b>\$24,945.21</b>	<b>\$2,170.00</b>	<b>\$99,781.00</b>
Per Capita-Expenses	\$6,041.58	\$8,279.42	\$27,430.60	\$24,838.26	(\$2,592.34)	\$99,353.00
Mission Giving-Expenses	\$1,115.64	\$1,851.92	\$7,004.05	\$5,555.76	(\$1,448.29)	\$22,223.00
<b>Total Expenses</b>	<b>\$42,165.35</b>	<b>\$37,006.98</b>	<b>\$119,808.92</b>	<b>\$111,020.94</b>	<b>(\$8,787.98)</b>	<b>\$444,084.00</b>
<b>Net Operating Total</b>	<b>(\$18,613.45)</b>	<b>(\$1,047.06)</b>	<b>\$746.70</b>	<b>(\$3,141.18)</b>	<b>\$3,887.88</b>	<b>(\$12,565.00)</b>
<b>Other Revenues</b>						
Designated Income (Loss)	\$0.00	\$0.00	\$174.91	\$0.00	\$174.91	\$0.00
Property Contributions	\$0.00	\$0.00	\$0.00	\$0.00	\$0.00	\$0.00
<b>Total Other Revenues</b>	<b>\$2,445.06</b>	<b>\$0.00</b>	<b>\$7,520.37</b>	<b>\$0.00</b>	<b>\$7,520.37</b>	<b>\$0.00</b>
<b>Other Expenses</b>						
<b>Total Other Expenses</b>	<b>\$2,792.89</b>	<b>\$0.00</b>	<b>\$8,378.67</b>	<b>\$0.00</b>	<b>(\$8,378.67)</b>	<b>\$0.00</b>
<b>Net Total</b>	<b>(\$18,961.28)</b>	<b>(\$1,047.06)</b>	<b>(\$111.60)</b>	<b>(\$3,141.18)</b>	<b>\$3,029.58</b>	<b>(\$12,565.00)</b>

## PRESBYTERY CALENDAR – 2025

### MAY

15	Presbytery meeting at Grace, Tuscaloosa, 9:00 AM
16	Presbytery office closed
20	Executive Council, via Zoom only, 9:30 AM
20-25	Pneumatrix Conference
22	Personnel, 9:00 AM, via Zoom
26	Presbytery office closed in recognition of Memorial Day
27	Anti-Racism, via Zoom, 10:00 AM

**PLEASE NOTE: THE PRESBYTERY OFFICE WILL BE CLOSED MAY 21 – JUNE 4<sup>TH</sup> FOR REMODELING DUE TO A PREVIOUS FLOOD.**

### JUNE

4	Presbytery Staff meeting, via Hybrid, 10:00 AM
10	COM, via Hybrid, Presbytery office, 10:00 AM
16	Presbytery office closed in recognition of Juneteenth
17	Executive Council, via Hybrid, 9:30 AM
24	Anti-Racism, via Zoom, 10:00 AM

### JULY

2	Presbytery Staff meeting, via Hybrid, 10:00 AM
4	Presbytery office closed in recognition of Independence Day
8	COM, via Hybrid, Presbytery office, 10:00 AM
15	Executive Council, via Hybrid, 9:30 AM
28	CPM, via Hybrid, 10:00 AM
29	Anti-Racism, via Zoom, 10:00 AM

### AUGUST

6	Presbytery Staff meeting, via Hybrid, 10:00 AM
9	CRE Continuing Education Class at PSL
19	Executive Council, via Hybrid, 9:30 AM
21	Presbytery meeting at First, Birmingham, 9:00 AM
22	Presbytery office closed
26	Anti-Racism, via Zoom, 10:00 AM