

21st Century Communication Techniques

# TELLING YOUR STORY

Telling your story

**WHAT IS YOUR  
STORY?**

Telling your story

# YOUR IDENTITY

Who are we?

What do we have to share?

What's special about the life of our congregation?

Telling your story

# YOUR IDENTITY

Descriptive labels

Mission (vision) statement

Community identity/reputation

Telling your story

**WHY TELL YOUR  
STORY?**

Telling your story

# OUTREACH

It's part of our mission to share the Good News  
It's how we share who we are with our community  
It is how we remind ourselves/reinforce who we are

Edgewood Presbyterian Church

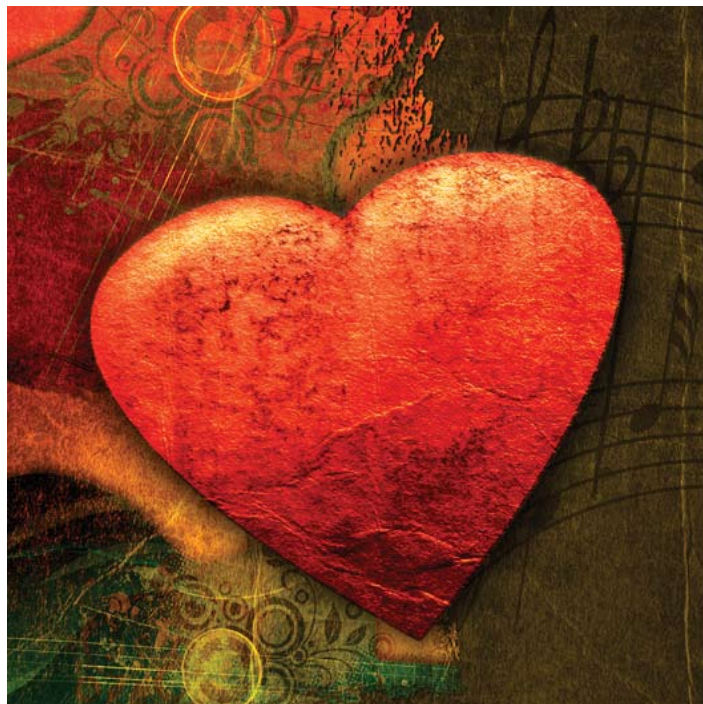
**OPEN HEARTED,  
OPEN MINDED**

# Edgewood Presbyterian Church

## **MISSION STATEMENT**

We joyfully proclaim the Gospel of God's love. As a diverse and inclusive community of believers, we celebrate our unity in Christ. We believe we are called to compassionate service in our congregation, in our community and in the world. We invite all who want to explore the great mystery of faith and paths of discipleship to join us.

# Edgewood Presbyterian Church



**We are**  
**open hearted**

**Sunday worship 9:30 a.m.**

Edgewood Presbyterian Church



**A different kind  
of church**

**Sunday worship 9:30 a.m.**

# EDGEWOOD

PRESBYTERIAN CHURCH (USA) 

Come as **you** are  
to a **different**  
kind of  
church



Looking for a place to worship while you're away from your home church?  
Want to broaden – even question – your faith experience?  
Want to try a church that may be different from your past church experiences?  
Just looking? **Come visit us at Edgewood Presbyterian Church on Oxmoor Road**



You'll find

- > an **intimate, diverse** congregation with open hearts and open minds that welcomes all
- > comforting, **traditional** music and worship with a **fun** attitude (and casual dress)
- > weekly celebration of the **Lord's Supper** (open to all who call on His name)
- > stimulating discussions – even **disagreement** – in Sunday school classes
- > delicious dinners and programs every Wednesday (September–May) – **your first meal free\***
- > **Westminster College Ministry** meetings and dinner Tuesday nights (with UAB, BSC students)

**Come find out what it means to worship just as YOU are**

850 Oxmoor Road, Homewood	871-4302	www.edgewoodpc.org	9:30 a.m. worship
10:50 a.m. Sunday school	<b>"OPEN HEARTED, OPEN MINDED"</b>		



# EDGEWOOD

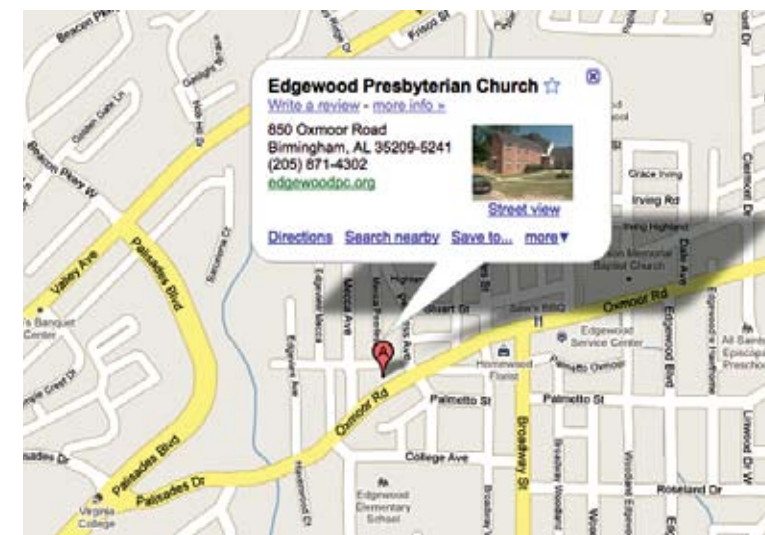
PRESBYTERIAN CHURCH (USA) 

Come as **you** are  
and **eat free\***

\* **Wednesday night fellowship** for first-time student visitors (\$6 value)

Just show your student ID card on any Wednesday at 5:45 p.m. September to May

The first Wednesday night fellowship is Sept. 8 (Valid fall term 2010–spring term 2011)



## How to find us

- > From Samford, turn right onto Lakeshore Drive
- > Turn right onto Greensprings Highway (Alabama 149)
- > At the first traffic light, turn right onto Broadway Street
- > Follow Broadway to Oxmoor Road (T intersection), turn left
- > Edgewood is one block away on your right, with parking in the lot on Peerless Avenue or on the street

Need more info? E-mail our pastor **Sid Burgess** at sburgess@aol.com

## Links



Learn more about us, download our monthly newsletter, and view photo galleries at edgewoodpc.org



Learn more about the Presbyterian Church USA at pcusa.org



Look for us on Facebook at Edgewood Presbyterian Church PCUSA



See video of Presbyterian churches in our area at psipcusa.org

850 Oxmoor Road, Homewood	871-4302	www.edgewoodpc.org	9:30 a.m. worship
10:50 a.m. Sunday school	<b>"OPEN HEARTED, OPEN MINDED"</b>		



*Open hearted*

*A diverse and inclusive community*

*Joyfully proclaiming God's love*



*Celebrating our unity in Christ*

*Called to compassionate service*

*Open minded*



*My/Our commitment  
to Edgewood for 2011*

In grateful recognition that all my/our time, treasure, and ability comes from God, I/we gladly pledge my/our support of Christ's church in the amount of \$ ..... for 2011.

\$ ..... *Weekly*      \$ ..... *Monthly*

\$ ..... *Quarterly*      \$ ..... *Annually*

Name(s): .....

Address: .....

Phone: ..... Email: .....

☐ I/We do not wish to pledge, but would like to give a one-time gift to in the amount of \$ .....

☐ I/We are so overwhelmed with life currently we can't make a decision right now.

☐ I/We would like to speak with a member of the Session about ways to use my/our gifts and talents at Edgewood.

Signature .....

Signature .....

*This pledge card may be filled out online at [www.edgewoodpc.org](http://www.edgewoodpc.org). Your commitment may be adjusted at any time by contacting our bookkeeper or treasurer.*

Telling your story

# OWN YOUR STORY

Determine your identity as a congregation

Develop a strategy for telling your story

Use the right tools to tell your story

21st Century Communication Techniques

**PRINT**

Print

# PRINT MEDIA

Newsletters

Banners

Fliers, posters, door hangers

Advertising

Print

# NEWSLETTERS

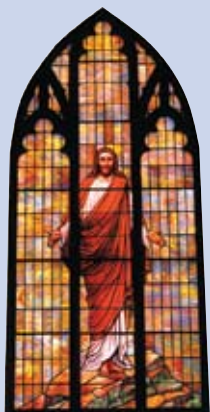
Internal communication  
Outreach

# THE EDGEWOOD EPISTLE



The monthly newsletter of  
Edgewood Presbyterian Church

APRIL 2011



## EDGEWOOD PRESBYTERIAN CHURCH (USA)

850 Oxmoor Road,  
Homewood  
871-4302  
769-0244 (fax)  
www.edgewoodpc.org  
Sunday worship 9:30 a.m.  
Sunday school 10:45 a.m.  
Wednesday supper 5:45 p.m.

### STAFF

**Rev. Sid Burgess**  
Pastor  
942-5907  
sidburg@aol.com

**Rev. Debbie Feagin**  
Supply pastor  
979-3248  
debbifeagin@aol.com

**Amanda Klimko**  
Music director

**Pat Fitzsimmons**  
Organist

**Tara Hewitt**  
Youth director

**Lavon Chaney**  
Office manager &  
bookkeeper

## More diverse, more inclusive

In a step to formalize our 'open-hearted, open-minded' welcome, Session to vote on affiliation with More Light Presbyterians.

**E**dgewood's new mission statement declares that "as a diverse and inclusive community of believers, we celebrate our unity in Christ." One of the ways Session has identified to more fully live this mission of being a more diverse and inclusive community is through an affiliation with More Light Presbyterians.



More Light is "a network of people seeking the full participation of lesbian, gay, bisexual and transgender people of faith in the life, ministry and witness of the Presbyterian Church (USA)." More Light affiliation can help us attract the large number of gay persons who grew up in the church but who are no longer active. We also can attract younger heterosexual couples, some with children, who have gay and lesbian friends and want a church that is welcoming and affirming. The goal is not to become a "gay" church but one where all that come in the name of Christ are welcomed.

Churches that have embraced the More Light concept have said the process impacted their work and witness on other justice issues, such as disability rights, economic justice, environmental justice, global justice, hate crimes, HIV/AIDS, health care, homelessness, hunger, immigration, labor, racial justice, universal human rights, and women's rights. Edgewood approaches More Light affiliation having already engaged most of these issues.

Join the Adult II Sunday school class in the fellowship hall after worship on April 10 for an open forum where questions and concerns about affiliating with More Light will be freely discussed.

### MORE LIGHT FORUM

► The Adult II  
Sunday school class  
will host an open  
forum about what  
affiliation with More  
Light Presbyterians  
means.

► **When:** Sunday,  
April 10, 10:45 a.m.

► **Where:**  
Fellowship hall

# THE EDGEWOOD EPISTLE



The monthly newsletter of  
Edgewood Presbyterian Church

OCTOBER 2011



## EDGEWOOD PRESBYTERIAN CHURCH (USA)

850 Oxmoor Road,  
Homewood  
871-4302  
769-0244 (fax)  
www.edgewoodpc.org  
Sunday worship 9:30 a.m.  
Sunday school 10:45 a.m.  
Wednesday supper 5:45 p.m.

### STAFF

**Rev. Sid Burgess**  
Pastor  
942-5907  
sidburg@aol.com

**Rev. Debbie Feagin**  
Supply pastor  
979-3248  
debbifeagin@aol.com

**Amanda Klimko**  
Director of music  
ministries

**Pat Fitzsimmons**  
Organist

**Tara Hewitt**  
Youth director

**Lavon Chaney**  
Office manager &  
bookkeeper

## Learning about power of prayer

Wednesday night programs will explore how and why we pray in our daily lives.

**C**an doing the dishes be prayer? If it can, what does that mean to our walk with God and each other? These are some of the questions that will be explored during Wednesday night programs in October.

Elder **Kevin Patton** will lead four sessions on "Becoming a Praying Congregation," which will discuss and practice forms of prayer as we prayerfully consider the gift of Edgewood Church in our upcoming stewardship campaign.

In August, Kevin attended a week-long class at Columbia Seminary on the subject, led by pastor and author **Jane Vennard**. "Through several assigned books and participatory exercises, we considered our personal experiences with prayer, thought about how and why we prayed, tried our hands at some new ways to pray, and considered broadening our view of prayer to include much more of our day," Kevin says.

The October sessions are intended as open discussions, recognizing that prayer is not a "one size fits all" proposition, but is open to a host of perspectives, approaches and techniques, Kevin says. Resources for personal and group reflection will be offered for those wanting to dig deeper.

### BECOMING A PRAYING CONGREGATION

► Wednesday nights during October following fellowship supper, which begins at 5:45 p.m.



Newsletters

# INTERNAL COMMUNICATION

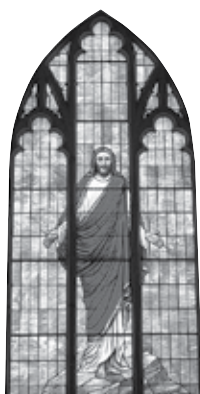
Be transparent • Be comprehensive • Be instructive

# THE EDGEWOOD EPISTLE



The monthly newsletter of  
Edgewood Presbyterian Church

**FEBRUARY 2009**



## Edgewood Presbyterian Church

850 Oxmoor Road  
Homewood  
871-4302  
www.edgewoodpc.org  
Sunday worship 9:30 a.m.  
Sunday school 10:45 a.m.  
Wednesday supper 5:45 p.m.

### STAFF

**Rev. Sid Burgess**  
Pastor  
942-5907  
sidburg@aol.com

**Janice Philpot**  
Church administrator  
322-6258  
jpatchurch@aol.com

**Amanda Klimko**  
Music director

**Pat Fitzsimmons**  
Organist

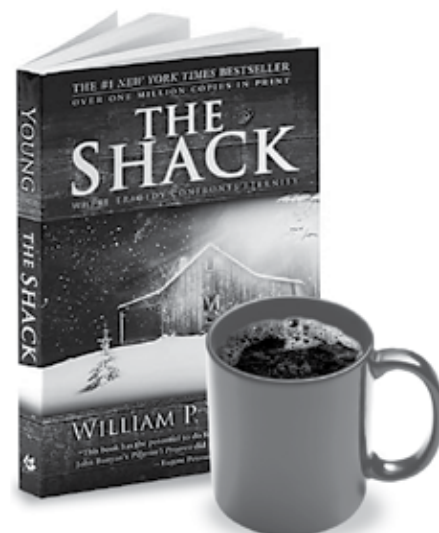
**Debbi Feagin**  
Christian Nurture

**Patricia Burch**  
Youth director

## Table Talk Coffee Shop

Something new on Sunday mornings for the new,  
the occasional, the young – and the curious.

Following worship, upstairs in the fellowship hall,  
**Stephen Steward** is leading a class for young adults  
(the twenty- and thirtysomethings in our congregation). The  
focus is discussion and fellowship around  
books (sometimes films) and their spiritual  
relevance. The class began on Jan. 25 with a  
dozen people. Their first book is "The Shack."



"When I first came to EPC," Stephen says, "I  
found it difficult to find a place to go after the ser-  
vice. I hope that you can come on by and see if this  
class is a place for you."

Just as we can study the Bible through a literary  
lens, as we have been on Wednesday evenings, we  
can also study literature through a Biblical/spiritual  
lens, Stephen says. For those who may not feel that  
they have a solid grasp of the Bible, this can be a  
non-intimidating way in.

As the church became less the focus of Americans throughout the last  
half of the 20th century, many in younger generations began to lose  
sight of the Biblical sources which permeate much of modern thought.  
In other words, it's easy to lose sight of the forest (Biblical and histori-

**Continued on page 4**

### ABOUT THE BOOK

► "The Shack," by William P. Young. A man receives a suspicious note, apparently from God,  
inviting him back to the shack where his youngest daughter may have been murdered.  
Against his better judgment he arrives at the shack on a wintry afternoon and walks back  
into his darkest nightmare. What he finds there will change his world forever.

# THE EDGEWOOD EPISTLE



The monthly newsletter of  
Edgewood Presbyterian Church

**MAY 2009**



## Edgewood Presbyterian Church

850 Oxmoor Road  
Homewood  
871-4302  
www.edgewoodpc.org  
Sunday worship 9:30 a.m.  
Sunday school 10:45 a.m.  
Wednesday supper 5:45 p.m.

### STAFF

**Rev. Sid Burgess**  
Pastor  
942-5907  
sidburg@aol.com

**Janice Philpot**  
Church administrator  
322-6258  
jpatchurch@aol.com

**Amanda Klimko**  
Music director

**Pat Fitzsimmons**  
Organist

**Debbi Feagin**  
Christian Nurture

**Patricia Burch**  
Youth director

## Special offerings for mission

Two offerings in May will let us support  
disaster relief, refugee assistance and youth.

The PCUSA encourages churches to give generously to  
support mission. Financial support is an important aspect  
of the connection between churches and the work done in  
mission around the world on your behalf. Edgewood will have  
the opportunity this month to give in support  
of two significant ministry efforts.



Kalthoma, a refugee from Darfur, is part  
of a group resettled through One Great  
Hour of Sharing funds.

Since 1949, Presbyterians have joined with mil-  
lions of other Christians through One Great Hour  
of Sharing to share God's love with people experi-  
encing need. Edgewood will take this offering on  
Sunday, May 10. Our gifts support ministries of  
disaster response, refugee assistance, and commu-  
nity development that help people find safe refuge,  
start new lives and work together to strengthen  
their families and communities. The Presbyterian  
Hunger Program receives 36 percent of undesig-  
nated One Great Hour of Sharing gifts, while the Self-Development of  
People and Presbyterian Disaster Assistance each receive 32 percent.

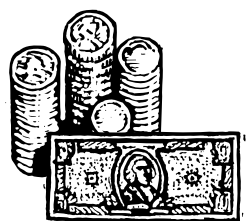
The Pentecost Offering is traditionally received on the day of Pente-  
cost (May 31). It provides a direct way to meet the needs of children at  
risk, youth and young adults. Congregations are encouraged to keep 40  
percent of the offering to support ministry with children at risk in their  
communities. The General Assembly's portion provides leadership de-  
velopment opportunities for Presbyterian youth and young adults and  
supports children-at-risk programs at the national level. The General  
Assembly Council divides the remaining 60 percent among ministries  
with youth and young adults (25 percent); young adult volunteers (25  
percent); and child advocacy ministries (10 percent).



### SPECIAL OFFERINGS

► One Great  
Hour of Sharing,  
Sunday, May 10

► Pentecost  
Offering, Sunday,  
May 31



## OPERATING FUND

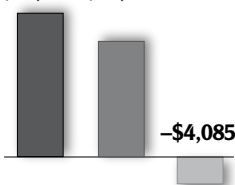
2009 ANNUAL BUDGET

**\$265,000**

### JUNE OFFERINGS

Pledged vs. actual

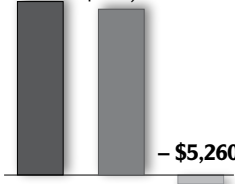
**\$19,451 \$15,366**



### YEAR TO DATE OFFERINGS

Pledged vs. actual

**\$116,707 \$111,447**



## BUDGET REPORT

Budget figures represent pledged vs. actual income rather than the "bottom line." The Stewardship ministry unit hopes this will emphasize the importance meeting our pledges has in the life of the church.

# NEWS & NOTES

## Session gets briefing on resolution of tax issues

It may take up to six months for Edgewood to learn how we will resolve some \$80,000 in past due federal employment taxes, according to **Sandy Durham**, Presbyterian elder and tax accountant from Tuscaloosa, who met with our Session on Oct. 11.

Elder **Kevin Henderson** has completed tax returns for 16 delinquent quarters, going back to 2005. Clerk of Session **Julie Metheny** signed these reports, and they have been submitted to the IRS.

Filing these returns, along with payment, was the job of our bookkeeper, who resigned Sept. 1. As with every employer, the church is required to withhold 7.5 percent of each employee's pay, and match it with 7.5 percent to pay for Social Security and Medicare premiums. Pastors are considered "self-employed" for tax purposes and pay a 15 percent self-employment tax. At Pastor **Sid Burgess'** request, a sum equal to slightly more than 15 percent of his salary has long been withheld from his pay check every pay period so that at year's end he would get a tax refund instead of owing additional tax.

Sandy is a former IRS employee who now works for a CPA firm in Tuscaloosa, where her husband, **Charlie Durham**, is pastor of First Presbyterian Church and where Sandy currently serves on Session. Her ministry to our Presbytery is to come to the aid of congregations who have tax problems, and she does this without charging any fees. "You are by no means the first church to fall victim to this circumstance," Sandy told the Session, "but from my experience you are responding in the most responsible and open manner possible."

Representatives of Session have filed police reports detailing what Session believes to be mishandling of church money and falsifying of church financial reports. Sandy hopes those police reports will allow the IRS to abate or waive most of the penalties assessed for not filing and not paying our taxes. Even if those penalties are waived, however, we will owe interest on all of the past due taxes, Sandy explained. We are in the process of filing a claim with Church Mutual, our insurance company. Our policy provides up to \$20,000 for losses due to employee dishonesty.

## Men's group to explore 'living a life of significance'

The Men's Bible Study is set to begin a six-week study focused on living a life of significance. The group will watch and then discuss video clips from a DVD by author **John Ortberg**, entitled *When the Game is Over, it all goes Back in the Box*. The study compares life to a game of Monopoly, while offering insights and suggestions in how to play the game (and life) well. The group meets on Fridays from 7 to 8 a.m., beginning Nov. 6.

The group recently completed an eight-week study of the "Parable of the Prodigal Son," using **Henri Nouwen's** book, *The Return of the Prodigal Son*. All men are invited to participate. Contact **Kevin Patton** with questions or comments.

## Help wanted with church library

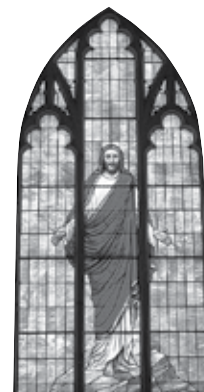
Looking for a place of service and involvement at Edgewood? Christian Nurture is praying for someone to take charge of our library—specifically the cataloging of an abundance of recently gifted books, shelving returned books, culling obsolete books, and a general monitoring of library use. Best person for this job is someone available on weekdays. Please contact **Kathy Silvie**.

# THE EDGEWOOD EPISTLE



The monthly newsletter of  
Edgewood Presbyterian Church

**JANUARY 2010**



## Edgewood Presbyterian Church

850 Oxmoor Road  
Homewood  
871-4302  
www.edgewoodpc.org

Sunday worship 9:30 a.m.  
Sunday school 10:45 a.m.  
Wednesday supper 5:45 p.m.

## STAFF

**Rev. Sid Burgess**  
Pastor  
942-5907  
sidburg@aol.com

**Lavon Chaney**  
Office manager &  
bookkeeper

**Amanda Klimko**  
Music director

**Pat Fitzsimmons**  
Organist

**Debbie Feagin**  
Christian Nurture

**Patricia Burch**  
Youth director

# Embezzlement results in tax bill

**Church faces \$128,000 bill from IRS for unpaid taxes and penalties due to financial fraud.**

The IRS is seeking almost \$128,000 from Edgewood for employment taxes that were not paid but instead were diverted by the former church bookkeeper since late 2005.

According to elder and Session member **Kevin Henderson**, W2 forms and monthly Session financial reports showed the money was paid, but quarterly returns were not filed. IRS collection attempts were intercepted by the bookkeeper and not reported to Session. The Session learned about the problem as details of apparent embezzlement came to light last year.

The bill includes about \$79,000 in taxes and withholding, \$36,000 in penalties and \$13,000 in interest.

The church is seeking relief in several areas. "We filed a police report claiming embezzlement and falsification of financial reports, and because of that we hope the IRS will abate (forgive) the \$36,000 in penalties, and our insurance will pay \$20,000. There is evidence of substantial unauthorized payments to Birmingham-Southern College (presumably for tuition), and we are considering asking BSC to return the stolen funds," Henderson says.

The church also has received at least \$22,000 in unsolicited outside gifts to help offset the loss.

The former bookkeeper has signed a confession with Homewood police and has written a letter of apology to the congregation.

Meanwhile, Kevin, chair of Session's stewardship ministry unity, says member financial commitments for 2010 appear to be holding firm to '09 levels. With reduced personnel costs, Kevin says we should be able to make monthly payments to the IRS while sustaining our current ministries.



**IRS**



## INSIDE

► Our former bookkeeper acknowledges "betrayal" and the "crime against the church" in apology to congregation, **Page 4**

Newsletters

# OUTREACH

Think beyond the congregation

A tool for strengthening connections

Part of overall communication strategy

# THE EDGEWOOD EPISTLE



The monthly newsletter of  
Edgewood Presbyterian Church  
**SEPTEMBER 2010**



## Edgewood Presbyterian Church

850 Oxmoor Road  
Homewood  
871-4302  
769-0244 (fax)  
www.edgewoodpc.org  
Sunday worship 9:30 a.m.  
Sunday school 10:45 a.m.  
Wednesday supper 5:45 p.m.

### STAFF

**Rev. Sid Burgess**  
Pastor  
942-5907  
sidburg@aol.com

**Rev. Debbie Feagin**  
Supply pastor,  
Christian Nurture

**Amanda Klimko**  
Music director

**Pat Fitzsimmons**  
Organist

**Patricia Burch**  
Youth director

**Lavon Chaney**  
Office manager &  
bookkeeper

## Living into the body of Christ

Edgewood chooses the path of inclusion  
for those among us with disabilities.

By Ellen Gillespie

Our city has been the site of many important events related to civil rights. One that is often overlooked took place in 2006, when the 217th General Assembly of the Presbyterian Church (U.S.A.) met right here in Birmingham.

At that meeting, the General Assembly approved a sweeping document, "Living into the Body of Christ: Towards Full Inclusion of People with Disabilities." I was honored to be part of the Task Force that worked for three years to write this document. One of the most active members of the Task Force, a young woman who does not speak, but uses a communication device, wrote a poem to accompany the report. Here is a portion:

*We are all members of Christ's family.*

*Why can't you be welcoming?*

*We are all in need of a church which welcomes us and accepts us for who we are.*

*We are made in God's image.*

*When you forget to include us you are forgetting to include God.*

Many people with disabilities feel they will not be welcome at church. They may have been relegated to children's events or "special classes" at other churches in the past. As usual, Edgewood is choosing a new path, a path of inclusion rather than "separate but equal" as we try to be more welcoming to all.



Elder Kevin Henderson serves communion to members of Arc of Jefferson County, who have been worshipping at Edgewood since Christmas 2009.

Continued on page 4

# THE EDGEWOOD EPISTLE



The monthly newsletter of  
Edgewood Presbyterian Church  
**NOVEMBER 2010**



## Edgewood Presbyterian Church

850 Oxmoor Road  
Homewood  
871-4302  
769-0244 (fax)  
www.edgewoodpc.org  
Sunday worship 9:30 a.m.  
Sunday school 10:45 a.m.  
Wednesday supper 5:45 p.m.

### STAFF

**Rev. Sid Burgess**  
Pastor  
942-5907  
sidburg@aol.com

**Rev. Debbie Feagin**  
Supply pastor,  
Christian Nurture

**Amanda Klimko**  
Music director

**Pat Fitzsimmons**  
Organist

**Patricia Burch**  
Youth director

**Lavon Chaney**  
Office manager &  
bookkeeper

## Restating our mission in world

Session's revision of mission statement  
begins process of church's transformation.

In a rare Saturday meeting on Saturday, Oct. 2, the Session worked to revise the church's 1997 mission statement as the next step to setting the church on a new course following the financial fraud.

Session's goal was to shorten the 223 word, 15-line text into a more readily accessible statement without losing the spirit of the original. The four-hour meeting was led by elder **Tom Coan** and hosted by clerk of Session **Julie Metheny**. The new document, formally adopted at Session's Oct. 17 meeting, is four lines and only 58 words:

*We joyfully proclaim the Gospel of God's love. As a diverse and inclusive community of believers, we celebrate our unity in Christ. We believe we are called to compassionate service in our congregation, in our community and in the world. We invite all who want to explore the great mystery of faith and paths of discipleship to join us.*

Session is planning two follow-up meetings to work on organizational structure and goals for the coming year. Those meetings, also to be led by Tom, are set for Nov. 1 and Dec. 6.

The 1997 statement will not be discarded but saved as a more complete summary of our history as well as our mission. Here is the full text:



Edgewood ranks in the Top 10 within our presbytery for mission giving,  
**Page 2**

Continued on page 4

Newsletters

# CONTENT & DESIGN

Building a better newsletter  
(It's all about the stories and the storytelling)

Content & design

# WRITING STORIES

Details, details, details

Write in a conversational style

Don't write in exclamation points!!!

Write for the outsider

Content & design

# DESIGN

Create a simple yet visually interesting format

Tell stories with words and pictures

Use color (even in black & white)



Bold Springs Presbyterian Church Newsletter

July 2006

## Bold Springs Welcomes Dr. Alina Voicu

At a called meeting on June 14, the Bold Springs session unanimously voted to engage Dr. Alina Voicu (pronounced VOY-ku) as our new Director of Music beginning July 1, 2006. She is the chair of the Arts Department of the Indian Springs School. A native of Romania, Alina holds a Bachelor of Music degree from Gheorge Dima Music Academy in Cluj, Romania, a Master of Music degree from Bowling Green University in Ohio, and earned her Doctor of Musical Arts degree from the University of Alabama where she received the Gloria Narramore fellowship and studied with Amanda Penick. She is current president of the Birmingham Music Teachers Association and Vice-President of the Alabama Music Teachers Association. She is married to Daniel Voicu, concert master of the Alabama Symphony Orchestra. They have two children, Alex and Angela. Alina's extraordinary expertise, energy, intelligence, and her deep faith bode well for the redevelopment of Bold Springs. If you've not already done so, please welcome her aboard!



Alina Voicu

Mark your calendar now!

Sunday, July 23

Bold Springs Town Hall Meeting

5 p.m. to 7:30 p.m.

at the church...

bring a covered dish,  
and also your dreams, visions, concerns, and hopes  
for the future of Bold Springs.

Members of the presbytery and your church's  
vision team want to hear you!

(read more about it inside »)



# the bridge

BOLD SPRINGS PRESBYTERIAN CHURCH (USA)

JULY 2006

## A new voice for music program

Her expertise and strong faith make Dr. Alina Voicu a timely choice as music director.

The Session took another step in the redevelopment of Bold Springs at a called meeting on June 14, when it unanimously voted to engage Dr. Alina Voicu as the new director of music beginning July 1.

Alina is the chair of the Arts Department of Indian Springs School. A native of Romania, she holds a bachelor of music from Gheorge Dima Music Academy in Cluj, Romania, a master of music from Bowling Green University in Ohio, and earned her doctor of musical arts from the University of Alabama where she received the Gloria Narramore fellowship and studied with Amanda Penick. She is currently president of the Birmingham Music Teachers Association and vice president of the Alabama Music Teachers Association.

She is married to Daniel Voicu (the name is pronounced VOY-ku), who is concertmaster of the Alabama Symphony Orchestra. They have two children, Alex and Angela.

Alina's extraordinary expertise, energy, intelligence and her deep faith bode well for the redevelopment of Bold Springs. If you've not already done so, please welcome her aboard!



Alina Voicu takes her place as music director on July 1

### TAKE NOTICE

#### TOWN HALL MEETING

> **When:** Sunday, July 23, 5-7:30 p.m.

Bring your dreams, visions, concerns and hopes for the future of Bold Springs. Members of the Presbytery and your church's vision team want to hear you.

**More details > Page 4**

#### SESSION MEETING

> **When:** Sunday, July 9, 1:30 p.m.

> **What:** Monthly meeting of Session

#### LEEDS HOMETOWN CELEBRATION

> **When:** Saturday, July 8, 10 a.m.-4 p.m.

> **What:** Leeds' annual community party

Bold Springs will have a booth set up, and needs people for 1- to 2-hour shifts. This is another opportunity to reach out to the community. Contact Polly Johnson at 699-2475 if you can help.

7544 Cahaba Valley Road • Birmingham, Alabama 35242

991-3040 • 862-2595 • 991-9248 (fax) • [www.boldsprings.org](http://www.boldsprings.org)

**Vacation Bible School**  
**July 17—20 from 9 AM – Noon**  
**Grades K-5**

Pre-register in the fellowship hall or call the church office

**Your Help Is Needed!!!**

**Our VBS plans are well under way and we need everyone's help!**

We've organized a mass mailing and other publicity to our surrounding community. If successful, this could expose our church to many families with young children. The week of VBS will be filled with games, fun snacks and crafts, music and mission. **Consider the tasks below and sign up at the Fiesta display in the fellowship hall.** Call or email Wendy with questions at 980-6459 or 907-7647 or [wendy\\_evans66@yahoo.com](mailto:wendy_evans66@yahoo.com). Thanks!!!!

**How You Can Help?**

- Send a postcard to your neighbors, friends & relatives inviting them to VBS
- Help paint and make props on Monday, July 10 at 10 AM
- Help decorate and set up for VBS on Sat., July 15 at 10 AM and Sun., July 16 following Sunday School
- Sign up to bring food to the Family Night taco dinner on Thurs., July 20 at 6 PM
- Agree to be a co-group leader during VBS. You will be in charge of 10 kids but no teaching is involved

**Items Needed**

- Mexican blankets, hats, etc.
- Ceramic fountain
- Terracotta pots
- Baskets
- Real and fake plants, garlands
- Small Wrought Iron table and chairs

If you have any of these items please call Wendy or bring them by the church during her office hours or Sunday mornings



**Leed's Hometown Celebration**  
**July 8, 10 AM—4 PM**

Bold Springs will have a booth set up for the Leed's Hometown Celebration on July 8th. We need people to oversee the booth for 1-2 hour shifts. This is another good opportunity for our church to reach out to the community. The booth will have VBS information, newsletters and other handouts. Please contact Polly Johnson as soon as possible if you are able to help (699-2475).

**Session Meeting**  
**Sunday, July 9, 2006**  
**at 1:30 PM**

**the bridge**

JULY 2006

**VACATION BIBLE SCHOOL**

- > July 17-20 from 9 a.m. to noon > Grades K through 5th
- > Preregister in the fellowship hall or call church office at 980-6459

**Volunteers needed for VBS**

Our Vacation Bible School plans are well under way and we need everyone's help. We've organized a mass mailing and other publicity to our surrounding community. If successful, this could expose our church to many families with young children. The week of VBS will be filled with games, fun snacks and crafts, music and mission.

Volunteers are needed in several areas. If you're interested, sign up at the Fiesta display in the fellowship hall. If you've got questions, contact Wendy Evans at 980-6459, 907-7647 or [wendy\\_evans66@yahoo.com](mailto:wendy_evans66@yahoo.com).

**HOW YOU CAN HELP**

- > Send a postcard to your neighbors, friends and relatives inviting them to VBS.
- > Help paint and make props on Monday, July 10 at 10 a.m.
- > Help decorate and set up for VBS on Saturday, July 15, at 10 a.m. and Sunday, July 16, following Sunday school.
- > Sign up to bring food to the Family Night taco dinner on Thursday, July 20, at 6 p.m.
- > Agree to be a co-group leader during VBS. You will be in charge of 10 kids but no teaching is involved.

**ITEMS NEEDED**

- > Mexican blankets, hats, etc.
- > Ceramic fountain
- > Terracotta pots
- > Baskets
- > Real and artificial plants and garlands
- > Small wrought iron table and chairs

If you have any of these items, please call Wendy or bring them by the church during office hours or Sunday mornings.

**Prayer shawls for senior outreach**

The knitting group is making prayer shawls for the Ruth and Naomi Senior Outreach. "We have good size groups with women from the church as well as new faces from the community," says Judy Lee, leader of the knitting group. The prayer shawls involve a simple knitting stitch that is taught at the meeting, which is every Monday from 10 a.m. to noon. The materials and tools needed will be available for purchase. Contact Judy at 699-24448 for more information.



**WORSHIP HIGHLIGHTS**

**Worship**

- > **Sunday, July 2** Lectionary passages: 2 Samuel 5:1-5, 9-10; Psalm 48; 2 Corinthians 12:2-10; Mark 6:1-13.
- > **Sunday, July 9** Lectionary passages: 2 Samuel 5:1-5, 9-10; Psalm 48; 2 Corinthians 12:2-10; Mark 6:1-13.
- > **Sunday, July 16** Lectionary passages: 2 Samuel 5:1-5, 9-10; Psalm 48; 2 Corinthians 12:2-10; Mark 6:1-13.
- > **Sunday, July 23** Lectionary passages: 2 Samuel 5:1-5, 9-10; Psalm 48; 2 Corinthians 12:2-10; Mark 6:1-13.
- > **Sunday, July 30** Lectionary passages: 2 Samuel 5:1-5, 9-10; Psalm 48; 2 Corinthians 12:2-10; Mark 6:1-13.

**Faith Talk**

- > **Adults:** "Talk Back," a discussion about the sermon with pastor Gerald Stephens Jr. in the sanctuary
- > **Adults:** Bible study, "The Present Word," led by elder Bob Parker in the fellowship hall

- > **Children & youth:** **Nursery,** birth to age 4; **multi-age** K-6th grade; **youth** 7th-12th grade, both in Sunday school hall



## What's this business 'bout a July 23rd "Town Hall Meeting?"

In 2003, the Presbytery of Sheppards and Lapsley in conjunction with the membership of Bold Springs agreed that our congregation would become a "redevelopment ministry" of the Presbytery. This means that both groups, our congregation and the presbytery, would gather spiritual and physical energies and resources and put them to work to transform Bold Springs from a *rural* ministry (which had served the community well for more than 150 years) into a *suburban* ministry (which will serve the community well in the future).

To this end, the presbytery found two five-year grants—\$25,000 per year from a presbytery fund and \$50,000 per year from the Independent Presbyterian Church Foundation—which began paying in 2005 to support the growth and redevelopment of Bold Springs. This funding will end in December 2009.

Meanwhile, perhaps the *most important* aspect of congregational redevelopment is discernment of GOD'S WILL. No matter how much or little money a congregation has, the real success of its ministry will depend on whether it can fathom and embrace the mission God wants it to carry out.

To help us begin this process, two groups have been working together:

The **Bold Springs Vision Team** consists of church members Wayne Farrell, Kathy Goolsby, Monty Newport, Chuck Lane, Denise Perkins, and Jeanne Parker, with Gerald and Wendy sitting in as staff advisors.

The **Presbytery's Bold Springs Task Force** consists of Rev. Susan Clayton (Independent Presbyterian), Elder Ron Dauphinee (Grace Presbyterian and lay pastor of Avondale Presbyterian), Elder Robert Emerick (Edgewood Presbyterian), Rev. Dr. Tom Evans (Executive Presbyter), Rev. Drew Henry (First Presbyterian-Birmingham), and Rev. Margaret Northen (Honorably Retired from First Presbyterian-Jacksonville, AL).

These two groups working together strongly believe that God's desire for our congregation will emerge from the collection of ideas, hopes, dreams and concerns of *every* Bold Springs church-goer.

Therefore, on the evening of Sunday, July 23, absolutely EVERY Bold Springs church-goer is STRONGLY ENCOURAGED to be present for a covered-dish meal, and for a time when we will break into five or six small groups, each of which will be facilitated by one representative from the Vision Team (church member) and one representative from the Task Force (presbytery). Each set of facilitators will use the same four or five questions to shape a discussion about the future of Bold Springs. They will take careful notes and work to compile all of the ideas, hopes, dreams and concerns.

This will be an extraordinarily important gathering for our future together. **Please make plans now to be here from 5:00 to 7:30 p.m. on Sunday, July 23.**

### Our Prayer Concerns

Donna Bailey, Justin Clinkscales, Mike Haninger, Paul & Mildred Slimp,

Pete Dorsey, Harold Ricketts, Mary Frances Slay,

Larry Standifer, Julia Godwin, Ann Hull, Camille Fuller, Lynn Sims, Roy Ledbetter,

Bob Priest, Hazel Poe, Melinda Clinkscales, Caldwell Allen, Melissa Caito, Kristi Pike, Melvina Phillips

and her grandson (Rand), Sgt. Len Cowling III, Faye DeShazo,

Maddie Grace Partain, Jeannie Proctor, Barbara Mellon (Judy Lee's sister).



the bridge

JULY 2006

## Special meeting to explore the future of Bold Springs

In 2003, the Presbytery of Sheppards and Lapsley, in conjunction with the membership of Bold Springs, agreed that our congregation would become a "redevelopment ministry" of the Presbytery. This means that both groups would gather spiritual and physical energies and resources, and put them to work to transform Bold Springs from a *rural* ministry (which had served the community well for more than 150 years) into a *suburban* ministry (which will serve the community well in the future).

To this end, the Presbytery found two five-year grants – \$25,000 per year from Presbytery funds and \$50,000 per year from the Independent Presbyterian Church Foundation – which began paying in 2005 to support the growth and redevelopment of Bold Springs. This funding, which totals \$375,000, will end in December 2009.

Meanwhile, perhaps the most important aspect of congregational redevelopment is discernment of God's will. No matter how much or little money a congregation has, the real success of its ministry will depend on whether it can fathom and embrace the mission God wants it to carry out.

To help us with this process, two groups have been working together:

> The **Bold Springs Vision Team**, which consists of church members Wayne Farrell, Kathy Goolsby, Monty Newport, Chuck Lane, Denise Perkins and Jeanne Parker, along with pastor Gerald Stephens Jr. and church administrator Wendy Evans as staff advisers.

> The Presbytery's **Bold Springs Task Force**, which consists of the Rev. Susan Clayton (Independent Presbyterian), elder Ron Dauphinee (Grace Presbyterian and lay pastor of Avondale Presbyterian), elder Robert Emerick (Edgewood Presbyterian), the Rev. Dr. Tom Evans (executive presbyter), the Rev. Drew Henry (First Presbyterian-Birmingham), and the Rev. Margaret Northen (honorably retired from First Presbyterian-Jacksonville, Ala).

These two groups working together believe that God's desire for our congregation will emerge from the collection of ideas, hopes, dreams and concerns of every Bold Springs church-goer.

On Sunday, July 23, from 5 to 7 p.m., you will have a chance to share your hopes for Bold Springs at a covered-dish meal. "This will be an extraordinarily important gathering for our future together," Gerald says. At this gathering, we will break into five or six small groups, each of which will be moderated by a representative each from the vision team and task force. Each set of facilitators will use the same four or five questions to shape a discussion about the future of Bold Springs. They will take careful notes so as to compile all of the ideas, hopes, dreams and concerns we express. These will then be used to help shape the future of Bold Springs.



### PRAYER CONCERNS

- > Donna Bailey
- > Justin Clinkscales
- > Mike Haninger
- > Paul & Mildred Slimp
- > Pete Dorsey
- > Harold Ricketts
- > Mary Frances Slay
- > Larry Standifer
- > Julia Goodwin
- > Ann Hull
- > Camille Fuller
- > Lynn Sims
- > Roy Ledbetter
- > Bob Priest
- > Hazel Poe
- > Melinda Clinkscales
- > Caldwell Allen
- > Melissa Caito
- > Kristi Pike
- > Melvina Phillips and grandson Rand
- > Sgt. Len Cowling III
- > Fay DeShazo
- > Maddie Grace Partain
- > Jeannie Proctor
- > Barbara Mellon (Judy Lee's sister)



7544 Cahaba Valley Road  
Birmingham, AL 35242

Phones: (205)991-3040  
(205)862-2595  
Fax: (205)991-9248

### Bold Springs Church Staff

Gerald Stephens Jr. Minister ***	Wendy Evans Church Administrator ***
Alina Voicu Music Director ***	Chase Cooper Pianist ***
Janice Philpot Bookkeeper ***	Ray Quiles Custodian ***

Rick Frennea  
888 Mountain Ridge Drive  
Birmingham, AL 35209

### Sunday Morning Worship

9:30 a.m.

Lectionary Passages for July 9:

2 Samuel 5:1-5, 9-10; Psalm 48;  
2 Corinthians 12:2-10; Mark 6:1-13

### Faith Talk

10:50 a.m.

#### Adults

"Talk Back", a discussion  
about the sermon with Gerald

Sanctuary

Bible Study, "The Present Word"

Led by Elder Bob Parker

Fellowship Hall

#### Children and Youth

Nursery - Ages 0-4

Multi-Age K-6

Youth 7-12

Nursery

Sunday School Hall

Sunday School Hall

### Members of Session

Class of 2006

Randy Bailey

Kathy Goolsby

Chuck Lane

Class of 2007

Robert Parker

Jane Northcutt

Class of 2008

Wayne Farrell

Denise Perkins

John Lee

Non-Profit Org.  
U.S. Postage Paid  
Birmingham, AL  
Permit 104

the bridge

INSIDE JULY 2006

## A new voice for music program

Her expertise and strong faith make Dr.  
Alina Voicu a timely choice as music  
director > **ON THE COVER**



### ALSO INSIDE

Plans are under way for Vacation Bible School; find out how you can  
contribute > **Page 3**

Bold Springs will gather for a special meeting aimed at helping us discern  
God's will for the future > **Page 4**

### Prayer Shawls' For Ruth and Naomi

The knitting group is meet-  
ing every Monday at 10 AM to  
Noon to make prayer shawls for  
Ruth and Naomi Senior Out-  
reach. We have had good size groups with  
women from the church as well as new faces  
from the community. The prayer shawls in-  
volve a simple knitting stitch that is taught at  
the meeting. The materials and tools needed  
will be available for purchase. Call Judy Lee  
at 699-2448 for more information.

Please plan to be apart of this fun  
and meaningful group!



NON-PROFIT  
U.S. Postage  
PAID  
Permit No. 104  
Birmingham, AL

Address service requested

Phone: (205) 991-9248  
Birmingham, AL 35242

7544 Cahaba Valley Road

**BOLD SPRINGS PRESBYTERIAN CHURCH**

the bridge

Print media

# BANNERS

Focused message (think billboard)

Reach a broader audience

Events oriented

# Edgewood Presbyterian Church



**A welcoming  
congregation**

**Sunday worship 9:30 a.m.**

# Edgewood Presbyterian Church



## Come, Lord Jesus

**CHRISTMAS EVE**

**Candlelight & Communion Service • 5 p.m.**

**CHRISTMAS DAY**

**Service of Celebration • 10 a.m.**

Print media

# PRINT STRATEGY

Have a plan

Make it a mission

Focus on the storytelling